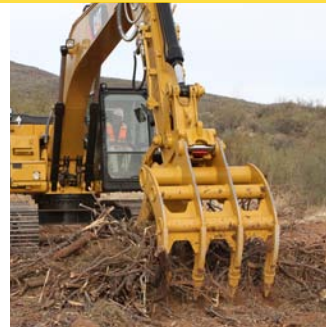


# Work Tool Attachments

PRODUCT LINE



Americas North



# Skid Steer, Multi Terrain & Compact Track Loaders

226B3    246D    259D    272D XHP    287D    297D XHP  
 236D    247B3    262D    277D    289D    299D  
 242D    257D    272D    279D    297D    299D XHP



## Augers



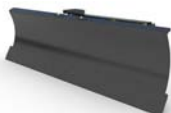
Model	Drive Shaft Torque @ Max Pressure		Drive Method
	Nm	(lbf ft)	
A14B	All	2304 (1700)	Direct
A19B	All	4122 (3042)	Single Planetary
A26B	All except 236D & 247B3	6826 (5034)	Double Planetary

## Backhoes



Model	Bucket Breakout Force		Dig Depth	
	kg	(lb)	mm	(in)
BH150	All	3241 (7146)	3074	(121)
BH160	246D, 262D-299D XHP	3241 (7146)	3074	(121)

## Blades



Model	Width		Height	
	mm	(in)	mm	(in)
Angle	All	1829/2134 (72/84)	614	(24)
Dozer	All	2002/2342 (79/92)	619	(24)

## Brooms



Model	Sweeping Width		Brush Diameter	
	mm	(in)	mm	(in)
Angle	BA118C	All	2119 (83)	815 (32)
Pick Up	BP115C	All	1524 (60)	660 (26)
	BP118C	247B3 & D Series Models	1829 (72)	660 (26)
Utility	BU115	All	1510 (59)	660 (26)
	BU118	D Series Models	1865 (73)	660 (26)

## Brushcutters



Model	Working Width		Tip Speed fpm	Unit Weight	
	mm	(in)		kg	(lb)
BR160	26B3, 247B3	1524 (60)	13080-18360	431	(950)
BR166	All	1676 (66)	10270-14420	476	(1050)
BR172	All	1829 (72)	11210-15730	499	(1100)
BR272	226B3	1829 (72)	14940-19660	508	(1120)
BR378	246D, 262D-299D XHP	1981 (78)	13700-19970	535	(1180)

## Buckets



Model	Width Range		Capacity Range	
	mm	(in)	m <sup>3</sup>	(yd <sup>3</sup> )
Dirt	All	1372-1981 (54-78)	0.3-0.44	(0.39-0.57)
General Purpose	All	1524-2134 (60-84)	0.36-0.63	(0.47-0.82)
Light Material	All	1829-2438 (72-96)	0.69-0.93	(0.9-1.22)
Multi-Purpose	All	1524-2134 (60-84)	0.3-0.43	(0.39-0.56)
Utility	All	1524-1829 (60-72)	0.43-0.52	(0.56-0.67)
Model	Width Range		Jaw Opening	
	mm	(in)	mm	(in)
Industrial Grapple	All	1524-1981 (60-78)	1016	(40)
Utility Grapple	All	1676/1829 (66/72)	902	(35.5)

## Cold Planers



Model	Drum Width		Number of Bits (conical)
	mm	(in)	
PC104B	All	350 (14)	42
PC205B	226B3, 236D-299DXHP	450 (18)	48
PC305B	226B3, 242D-299DXHP	450 (18)	48
PC306B	226B3, 242D-299DXHP	600 (24)	60
PC310B	246D-299DXHP	1000 (40)	78
PC408B	272D XHP/297D XHP/299D XHP	750 (30)	60
PC412B	272D XHP/297D XHP/299D XHP	1200 (47)	90

### BEFORE YOUR PURCHASE...

Contact your local Cat® dealer or visit [www.cat.com](http://www.cat.com) for more information.

Continued →

# Skid Steer, Multi Terrain & Compact Track Loaders continued



226B3	246D	259D	272D XHP	287D	297D XHP
236D	247B3	262D	277D	289D	299D
242D	257D	272D	279D	297D	299D XHP

Forks	Model	Tine Length		Fork Tine Width	
		mm	(in)	mm	(in)
Pallet	All	910-1220	(36-48)	100	(4)
	Model	Width		Exposed Fork Tine Length	
		mm	(in)	mm	(in)
Utility	All	1676/1829	(66/72)	627	(24.7)
Utility Grapple	All	1676/1829	(66/72)	627	(24.7)
Industrial Grapple	All	1676/1829	(66/72)	559	(22)

Hammers	Model	Operating Weight**		Blow Rate blows/min	Tool Diameter	
		kg	(lb)		mm	(in)
H55E*/H55Es	All	220-345	(485-761)	600-1680	58	(2.28)
H65E*/H65Es	All	260-390	(573-860)	720-1740	68	(2.68)

\*Flat top and pin-on models available  
\*\*Includes hammers, standard tool and mounting bracket

Material Handling Arms	Model	Width w/side step		Load Length (end point)	
		mm	(in)	mm	(in)
Fixed Length	All	1309	(52)	768	(30)

Mulchers	Model	Working Width		Max Cutting Diameter	
		mm	(in)	mm	(in)
HM315B	246D, 262D-299D XHP	1465	(58)	200	(8)
HM415B	272D XHP/297D XHP/299D XHP	1465	(58)	200	(8)

Rakes	Model	Jaw Opening		Width	
		mm	(in)	mm	(in)
Industrial Grapple Rake	All	940	(37)	1829/2134	(72/84)
Landscape Rakes	Model	Working Width		Bucket Capacity	
		mm	(in)	m <sup>3</sup>	(yd <sup>3</sup> )
LR15B	All	1576	(62)	0.3	(0.39)
LR18B	247B3 & All D Series Models	1883	(74)	0.34	(0.44)
Power Box Rakes	Model	Drum Width		Max Angling (right or left) degrees	
		mm	(in)		
		PR172	All	1829	(72)
PR184	All	2134	(84)	20	
PR190	All	2286	(90)	20	

Shears	Model	Force at Throat		Jaw Opening	
		kN	(Sh Ton)	mm	(in)
S305	236B3-299D	1812	(204)	240	(9.4)

Snow Blowers	Model	Intake Width		Throw Distance	
		mm	(in)	m	(ft)
SR117	226B3, 247B3	1702	(67)	9.1	(30)
SR118	All D Series Models	1854	(73)	12.2	(40)
SR121	All D Series Models	2159	(85)	12.2	(40)
SR318	226B3, 246D-299D XHP	1854	(73)	13.7	(45)
SR321	226B3, 246D-299D XHP	2159	(85)	13.7	(45)

Continued →

# Skid Steer, Multi Terrain & Compact Track Loaders continued

226B3    246D    259D    272D XHP    287D    297D XHP  
 236D    247B3    262D    277D    289D    299D  
 242D    257D    272D    279D    297D    299D XHP



## Snow Push



	Model	Moldboard Sections	Intake Width mm (in)	Coupler Interface
	8 ft – Standard	All	2299 (91)	SSL
	10 ft – Standard	All D Series Models	3061 (121)	SSL
	12 ft – Standard	262D-299D XHP	3823 (151)	SSL
	14 ft – Standard	272D-299D XHP	4585 (181)	SSL

## Stump Grinders



Model	Width		Length	
	mm	(in)	mm	(in)
SG16B	All	1175 (46)	1737 (69)	
SG18B	226B3, 242D-299D XHP	1175 (46)	1737 (69)	



## Tillers



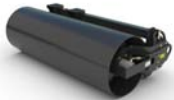
Model	Width		Working Depth	
	mm	(in)	mm	(in)
LT13B	All	1321 (52)	25-152	(1-6)
LT18B	247B3 & All D Series Models	1847 (73)	25-152	(1-6)

## Trenchers



Model	Overall Width		Working Depth	
	mm	(in)	mm	(in)
T6B	All	1426 (56)	914	(36)
T9B	All	1901 (75)	1219	(48)
T15B	226B3, 242D-299D XHP	1901 (75)	1524	(60)

## Vibratory Drum Compactors



Model	Drum Width		Dynamic Force	
	mm	(in)	kg	(lb)
CV16B	All	1676 (66)	5399	(11903)
CV18B	246D, 262D-299D XHP	1854 (73)	5399	(11903)

## Vibratory Plate Compactors



Model	Impulse Force			Base Plate Width	
	kN	lbf	Cycles/min	mm	(in)
CVP16	All*	16	(3650)	2200	305 (12)

\* Only for use with the BH150/BH160 Backhoe attachment.

## Wheel Saw



Model	Wheel Width		Number of Bits
	mm	(in)	
SW345B	242D-299D XHP	80 (3)	64
SW360B	262D-299D XHP	80/160/200 (3/6/8)	70/96/96
SW380B	272D-299D XHP	250 (10)	72
SW460B	272D XHP, 297D XHP, 299D XHP	80/160/200 (3/6/8)	70/96/96
SW480B	272D XHP, 297D XHP, 299D XHP	250 (10)	72



# Excavators (Mini)

300.9D 301.7D CR 302.7D CR 304E2 CR 308E2 CR SB  
 301.4C 302.2D 303E CR 305E2 CR  
 301.7D 302.4D 303.5E2 CR 305.5E2 CR



## Augers

	Model	Drive Shaft Torque @ Max Pressure		Drive Method
		Nm	(lbf ft)	
A7B	301.4C-302.7D CR	1105	(815)	Direct Drive
A14B	302.2D - 304E2 CR	2304	(1700)	Direct Drive
A19B	303E CR-305.5E2 CR	4120	(3040)	Single Planetary
A26B	305E2 CR-308E2 CR SB	6830	(5040)	Double Planetary



Click or scan above to see Hydraulic Dual Lock Coupler engage!



## Buckets

	Model	Width Range		Capacity Range	
		mm	(in)	m <sup>3</sup>	(yd <sup>3</sup> )
Digging	300.9D-302.7D CR	230-711	(9-28)	0.014-0.111	(0.018-0.145)
Ditch Cleaning	All	700-1600	(27.6-63)	0.027-0.42	(0.035-0.55)
Tilting Ditch Cleaning	302.2D-305.5E2 CR	1000-1600	(40-63)	0.055-0.28	(0.072-0.36)
Heavy Duty	303E CR-308E2 CR SB	300-914	(12-36)	0.05-0.39	(0.06-0.51)
Heavy Duty Capacity	305E2 CR-305.5E2 CR	300-914	(12-36)	0.08-0.30	(0.10-0.39)
Heavy Duty Rock	308E2 CR SB	610-762	(24-30)	0.23-0.31	(0.30-0.40)
Mud Buckets	301.4C-308E2 CR SB	1000-1500	(40-60)	0.09-0.52	(0.12-0.68)



Click or scan above to see Hydraulic Dual Lock Coupler disengage!



## Couplers

	Model	Weight	
		kg	(lb)
Dual Lock	301.4C - 308E2 CR SB	12-110	(29-206)
Dual Lock Tilt	308E2 CR SB	112-180	(247-398)
Dedicated	308E CR SB	159	(350)



## Grapples

	Model	Jaw Opening		Weight	
		mm	(in)	kg	(lb)
Contractors'	G107B 308E2 CR SB	1765	(70)	360	(794)



Click or scan above to see H35/65Es Hammers in action!



## Hammers

	Model	Operating Weight**		Tool Diameter		
		kg	(lb)	blows/min	mm	(in)
H25D	300.9D	70	(154)	1000-1900	36	(1.42)
H35E/H35Es	301.4C-302.4D	125-130	(276-287)	600-1800	40	(1.57)
H45E/H45Es	301.7D-302.7D CR	145-250	(320-551)	780-1800	50	(1.97)
H55E*/H55Es	302.7D CR-305.5E2 CR	220-345	(485-761)	600-1680	58	(2.28)
H65E*/H65Es	303.5E CR-308E2 CR SB	260-390	(573-860)	720-1740	68	(2.68)
H75Es	308E2 CR SB	480-500	(1058-1103)	840-1650	74.5	(2.93)
H95Es	308E2 CR SB	600-730	(1323-1610)	700-1260	87.5	(3.44)

\*Flat top and pin-on models available

\*\*Includes hammer, standard tool and mounting bracket.



Click or scan above to see H75Es Hammers in action!



## Shears

	Model	Force at Throat		Jaw Opening	
		kN	(Sh Ton)	mm	(in)
S305	303.5E CR-308E CR SB	1812	(204)	240	(9)

## Thumbs

	Model	Rotation Angle
		Degrees
Hydraulic	302.4D-308E2 CR SB	113-116
Stiff Link	308E2 CR SB	81
Hydraulic Progressive Link	308E2 CR SB	174-181



Click or scan above to see H95Es Hammers in action!



## Vibratory Plate Compactors

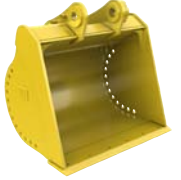
	Model	Impulse Force		Cycles/min	Base Plate Width	
		kN	(lbf)		mm	(in)
CVP16	303.5E CR-305.5E CR	16	(3650)	2200	305	(12)
CVP40	308E CR SB	40	(8928)	2200	584	(23)

## BEYOND YOUR PURCHASE...

Support plans are available for your machine extending all the way out to the attachment to help protect your investment.

# Excavators

**311F RR**    **316E**        **321D LCR**    **335F CR**        **374F**  
**312E**        **318E**        **323F**         **336F**         **390F**  
**313F GC**    **320E**        **326F**         **336F XE**  
**314E CR**    **320E RR**    **329F**         **349F**



## Buckets

	Model	Width Range		Capacity Range	
		mm	(in)	m <sup>3</sup>	(yd <sup>3</sup> )
Clean-up	311F RR-336F/336F XE	1500 / 1800	(60 / 72)	1.02 / 2.48	(1.33 / 3.24)
Ditch Cleaning	311F RR-336F/336F XE	1200-1800	(48-72)	0.57-1.91	(0.75-2.50)
Ditch Cleaning Tilt	311F RR-329F	1500/1800	(60/72)	0.57-1.14	(0.75-1.50)
Extreme Duty	336F-374F	1200-1900	(48-75)	1.48-3.80	(1.84-5.00)
General Duty	All	450-1900	(18-75)	0.25-4.60	(0.33-6.00)
General Duty High Capacity	349F-390F	2000	(79)	3.82-5.30	(5.00-7.00)
General Duty Pin Grabber Performance	316E/318E	600/900	(24/36)	0.33/0.57	(0.43/0.75)
General Duty Wide Tip	311F RR-349F	450-1950	(18-78)	0.27-3.41	(0.35-4.46)
Heavy Duty	320E-374F	600-1900	(24-75)	0.44-3.80	(0.57-5.00)
Heavy Duty Pin Grabber Performance	320E-349F	600-1850	(24-74)	0.44-2.56	(0.57-3.34)
Heavy Duty Power	320E-336F/336F XE	900-1500	(36-60)	0.79-1.86	(1.03-2.43)
Severe Duty	All	600-1900	(24-75)	0.30-4.60	(0.39-6.00)
Severe Duty Pin Grabber Performance	316E/318E	1050/1200	(42/48)	0.70/0.83	(0.92/1.09)
Severe Duty Power	320E/320E RR/321D LCR	900	(36)	0.79	(1.03)



## Couplers

	Model	Weight	
		kg	(lb)
Cat® Pin Grabber	311F RR-349F	188-944	(414-2082)
Dedicated	All	177-1402	(390-3090)
Pin Lock	311D RR-316E/320E-321D LCR	240-399	(530-880)



Click or scan above to see the Cat® Pin Grabber Coupler in action!



## Grapples

	Model	Jaw Opening		Weight		
		mm	(in)	kg	(lb)	
<b>Contractors'</b>	G112B	311F RR-314E	2195	(86.4)	857	(1885)
	G115B	316E/318E	2555	(100.6)	1286	(2830)
	G120B	320E-329F	2687	(105.8)	1523	(3350)
	G125B	320E-329F	3128	(123.1)	1932	(4250)
	G130B	320E-336F/336F XE	3223	(126.9)	2332	(5130)
	G145B	349F	3433	(135.2)	3050	(6724)
	G165B	374F	3860	(152.0)	4055	(8,940)
	G185B	390F	4076	(160.5)	4800	(10582)
<b>Demolition &amp; Sorting</b>	G310B	311F RR-316E	375	(0.49)	1800	(70.87)
	G315B	318E-321D LCR	550	(0.72)	2000	(78.74)
	G320B	321D LCR-329F	750	(0.98)	2200	(86.61)
	G325B	324E-336F/336F XE	850	(1.11)	2200	(86.61)
	G330	329F-349F	1000	(1.31)	2270	(89.40)
<b>Trash</b>	TG-312	311F RR-314E	1.70	(2.20)	2210	(87)
	TG-315	316E/318E	1.83	(2.40)	2210	(87)
	TG-B	320E-321D LCR	2.70/3.44	(3.60/4.5)	2540/2600	(100/102)
	TG-CB	326F-329F	3.80	(5.00)	3129	(123)
	TG-DB	336F/336F XE	4.6/5.5	(6.0/7.3)	3086/3470	(122/137)
	TG-TB	349E	5.04/8.17	(6.58/10.69)	3161/3800	(124/150)



Click or scan above to see Demolition & Sorting Grapples in action!

Continued →



# Excavators continued

**311F RR**    **316E**    **321D LCR**    **335F CR**    **374F**  
**312E**    **318E**    **323F**    **336F**    **390F**  
**313F GC**    **320E**    **326F**    **336F XE**  
**314E CR**    **320E RR**    **329F**    **349F**



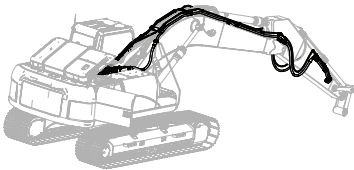
## Hammers

	Model	Operating Weight*		Blow Rate blows/min	Tool Diameter	
		kg	(lb)		mm	(in)
H95Es	311F RR/312E	600-730	(1323-1610)	700-1260	87.5	(3.44)
H110Es	311F RR-316E	950-1080	(2095-2381)	450-1000	99.5	(3.92)
H115Es	312E-320E RR	1070-1460	(2359-3219)	370-800	109.5	(4.31)
H120Es	316E-329F	1480-1860	(3263-4101)	350-620	119.5	(4.70)
H130Es	318E-329F	1750-2140	(3859-4719)	320-600	129.5	(5.10)
H140Es	326F-336F/336F XE	2410-2660	(5314-5865)	325-540	139.5	(5.49)
H160Es	336F/336F XE/349F	3230-3530	(7122-7784)	400-505	155.5	(6.12)
H180Es	349F/374F	3990-4340	(8798-9570)	275-450	174.5	(6.87)

\*Includes hammer, standard tool and mounting bracket



Click or scan above to see E Series Hammers in action!



## Hydraulic Solutions

	Model
Field-Installed Hydraulic Kits	All



## Multi-Processors

	Model	Jaw Set	Force at Primary Blade		Jaw Opening	
			kN	(Sh Ton)	mm	(in)
MP318	318E-326F	Demolition	2409	(270.7)	736	(29)
		Pulverizer	2279	(256.1)	820	(32.3)
		Universal	2511	(282.1)	468	(18.4)
		Concrete Cutter	2325	(261.2)	682	(26.9)
MP324	326F-336F/366F XE	Shear	3663	(411.6)	322	(12.7)
		Demolition	3308	(371.1)	903	(35.6)
		Pulverizer	3277	(368.2)	965	(38.0)
		Universal	3386	(380.5)	642	(25.3)
		Concrete Cutter	3202	(359.8)	826	(32.5)
MP30	329F/349F	Shear	5393	(606.0)	394	(15.5)
		Tank Shear	3976	(446.8)	485	(19.1)
		Concrete Cutter	4100	(460)	975	(38.4)
		Concrete Crusher	3800	(427)	1050	(41.3)
		Primary Pulverizer	3950	(444)	960	(37.8)
MP40	374F/390F	Secondary Pulverizer	4800	(539)	1100	(43.3)
		Shear	3750	(421)	470	(18.5)
		Tank Shear	4000	(449)	510	(20.1)
		Concrete Cutter	4400	(494)	1280	(50.4)
		Concrete Crusher	4650	(523)	1320	(52.0)
		Secondary Pulverizer	5500	(618)	1400	(55.1)
		Shear	4750	(534)	630	(24.8)



Click or scan above to see MPs in action!

Continued →



# Excavators continued

311F RR    316E    321D LCR    335F CR    374F  
 312E    318E    323F    336F    390F  
 313F GC    320E    326F    336F XE  
 314E CR    320E RR    329F    349F



## Rakes

Excavator	Model	Raking Width		Teeth	Tooth Spacing	
		mm	(in)		mm	(in)
Excavator	320E-336F/336F XE	838-1651	(33/49/65)	3/4/5	400	(16)



Click or scan above to see Secondary Pulverizers in action!



## Rippers

Excavator	Model	Shank Length		Weight Range	
		mm	(in)	kg	(lb)
Excavator	316E-390F	992-1801	(39-71)	330-2196	(728-4841)



Click or scan above for animation of Shear with Bolt-on Piercing Tip!



## Secondary Pulverizers

Model	Crushing force at tip	Jaw Depth		Jaw Opening			
		t	(st)	mm	(in)	mm	(in)
P215	316E-326F	119	(131)	722	(28)	838	(33)
P225	326F-336F/336F XE	174	(192)	899	(35)	1018	(40)
P235	336F/336F XE/349F	190	(209)	1103	(43)	1214	(48)



Click or scan above to see Pro Series Thumbs in action!



## Shears

Model	Mount	Force at Throat		Jaw Opening	
		kN	(Sh Ton)	mm	(in)
S320B	311F RR-318E	3706	(417)	409	(16)
	318E-336F/336F XE	3706	(417)	409	(16)
S325B	318E-321D LCR	5562	(625)	528	(21)
	326F-336F/336F XE	5562	(625)	528	(21)
S340B	326F-336F/336F XE	6818	(766)	563	(22)
	349F/374F	6818	(766)	563	(22)
S365C	336F/336F XE/349E	10342	(1162)	845	(33)
	374F/390F	10342	(1162)	845	(33)
S385C	349F/374F	12509	(1405)	879	(35)
	390F	12509	(1405)	879	(35)



## Thumbs

Model	Width (Range)		Weight (Range)	
	mm	(in)	kg	(lb)
Pro Series Hydraulic	311F RR-349F	522-1139 (20.6-44.8)	300-1410	(661-3109)
Utility Hydraulic	311F RR-329F	355-612 (14.0-24.1)	341-488	(751-1075)
Stiff Link	311F RR-349F	401-900 (15.8-35.4)	236-873	(520-1919)



Click or scan above to see Utility Thumbs in action!



## Vibratory Plate Compactors

Model	Impulse Force			Base Plate Width	
	kN	(lbf)	Cycles/min	mm	(in)
CVP75	311F RR-318E	74	16508	2200	737 (29)
CVP110	320E RR-336F/336F XE	110	(24669)	2200	864 (34)



Click or scan above to see Stiff Link Thumbs in action!



# Excavators (Material Handler)

M318D MH  
M322D MH  
M325D MH

330D MH  
MH3022  
MH3037

MH3049  
MH3059



## Grapples

	Model	Industry Capacity Class		Operating Weight		Max. Lift Capacity		
		L	(yd <sup>3</sup> )	kg	(lb)	kg	(lb)	
Orange Peel*	GSH15B	M318D MH-M322D MH/MH3022	600	(0.75)	1215/1450	(2679/3197)	4000	(8818)
	GSH20B	M318D MH-M325D MH/330D MH/MH3022	600	(0.75)	1575	(3472)	8000	(17637)
		M322D MH-M325D MH/330D MH/MH3022/MH3037/MH3049	800	(1.00)	1615/1920	(3660/4232)	8000	(17637)
	GSH22B	M322D MH-M325D MH/330D MH/MH3022/MH3037/MH3049	1000	(1.25)	1660/1975	(3660/4354)	8000	(17637)
MH3049			1147	(1.5)	2390	(5269)	12,000	(26,455)
MH3049/MH3059			1529	(2.0)	2410	(5313)	12,000	(26,455)
	MH3049/MH3059		1911	(2.5)	2430	(5360)	12,000	(26,455)

\*4- and 5-tine grapple models available



Click or scan above to see Orange Peel Grapples in action!



## BEYOND YOUR PURCHASE...

Your Cat dealer can assist with financing options and discuss day-to-day operating costs for your fleet and job requirements.

# Excavators (Wheeled)

M313D M316D M320F M325D  
M315D M318F M322D



## Buckets

	Model	Width Range		Capacity Range	
		mm	(in)	m <sup>3</sup>	(yd <sup>3</sup> )
General Duty	M313D-M322D	600-1350	(24-54)	0.39-1.59	(0.46-2.08)
Heavy Duty	M318F-M22D	900-1350	(26-54)	0.68-1.83	(0.88-1.81)
Ditch Cleaning	M313D-M322D	1500/1800	(60/72)	0.80/1.24	(1.23-1.63)
Ditch Cleaning Tilt	M313D-M316D/M322D	1500/1800	(60/72)	0.70-0.96	(0.87-1.25)



## Couplers

	Model	Weight	
		kg	(lb)
Cat® Pin Grabber	M313D-M322D	299-380	(659-837)
Pin Lock	M313D-M320D	288-399	(635-880)



## Grapples

	Model	Jaw Opening		Weight		
		mm	(in)	kg	(lb)	
<b>Contractors'</b>	G115B	M313D-M316D	2555	(100.6)	1286 (2830)	
	G120B	M318F-M322D	2687	(105.8)	1523 (3350)	
	G125B	M322D	3128	(123.1)	1932 (4250)	
<b>Demolition &amp; Sorting</b>	Model		Capacity		Width (open)	
			L	(yd <sup>3</sup> )	mm	(in)
	G310B	M313D-M316D	375	(0.49)	1800	(70.87)
G315B	M315D-M322D	550	(0.72)	2000	(78.74)	
<b>Trash</b>	Model		Capacity		Jaw Opening	
			m <sup>3</sup>	(yd <sup>3</sup> )	mm	(in)
	TG-315	M313D-M316D	1.83	(2.40)	907	(2000)
TG-B	M318F-M322D	2.7	(3.60)	1288	(2840)	



Click or scan above to see Demolition & Sorting Grapples in action!

Continued →

## BEYOND YOUR PURCHASE...

Follow Cat Attachments on Twitter: [@CatAttachments](https://twitter.com/CatAttachments)

# Excavators (Wheeled)

M313D M316D M320F M325D  
M315D M318F M322D



## Hammers

	Model	Operating Weight		Blow Rate blows/min	Tool Diameter	
		kg	(lb)		mm	(in)
H110Es	M313D-M316D	950-1080	(2095-2381)	450-1000	99.5	(3.92)
H115Es	M313D-M322D	1070-1460	(2359-3219)	370-800	109.5	(4.31)
H120Es	M315D-M322D	1480-1860	(3263-4101)	350-620	119.5	(4.70)
H130Es	M318F-M322D	1750-2140	(3859-4719)	320-600	129.5	(5.10)



Click or scan above to see E Series Hammers in action!



## Rippers

	Model	Shank Length		Weight Range	
		mm	(in)	kg	(lb)
Excavator	M315D-M322D	992/1084	(39/43)	330-456	(728-1006)

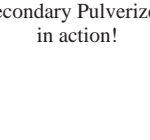


Click or scan above to see Secondary Pulverizers in action!



## Secondary Pulverizers

	Model	Crushing force at tip		Jaw Depth		Jaw Opening	
		t	(st)	mm	(in)	mm	(in)
P215	M315D-M322D	119	(131)	722	(28)	838	(33)



Click or scan above to see Shears in action!



## Shears

	Model	Mount	Force at Throat		Jaw Opening	
			kN	(Sh Ton)	mm	(in)
S320B	M318F-M322D	Stick	3706	(417)	409	(16)
	M313D-M315D	Boom	3706	(417)	409	(16)
S325B	M315D-M318F	Boom	5562	(625)	528	(21)
S340B	M318F	Boom	6818	(766)	563	(22)



Click or scan above to see Stiff Link Thumbs in action!



## Thumbs

	Model	Width (Range)		Weight (Range)	
		mm	(in)	kg	(lb)
Utility Hydraulic	M318F-M322D	600/612	(23.6/24.1)	439/488	(968/1075)
Stiff Link	M313D-M320F	401-679	(15.8-26.7)	236-305	(520-672)
	M322D	460-732	(18.1-28.8)	426-499	(940-1099)



## Vibratory Plate Compactors

	Model	Impulse Force			Base Plate Width	
		kN	lbf	Cycles/min	mm	(in)
CVP75	M313D-M318F	74	(16508)	2200	737	(29)
CVP110	M322D	110	(24669)	2200	864	(34)

# Backhoe Loaders

415F2 416F2 420F2 430F2 450F



## Augers

	Model	Drive Shaft Torque @ Max Pressure		Drive Method
		Nm	(lbf ft)	
A26B Pin-on	415F2-430F2	6830	(5040)	Double Planetary



## Blades

	Model	Width		Height	
		mm	(in)	mm	(in)
Angle	All	2819	(111)	1041	(41)



## Brooms

	Model	Sweeping Width		Brush Diameter	
		mm	(in)	mm	(in)
Angle	BA25	2500	(98)	700	(28)
Pickup Broom	BP25	2500	(98)	700	(28)
Special Application	2.5	2500	(98)	915	(36)



## Buckets

	Model	Width Range		Capacity Range	
		mm	(in)	m <sup>3</sup>	(yd <sup>3</sup> )
Loader (Front)	General Purpose	All	2262-2434 (89-96)	0.76-1.5 (1.0-2.0)	
	Multi-Purpose	All	2262-2425 (89-95)	1.0-1.2 (1.3-1.5)	
	Side Dump	450F	2514-2765 (99-109)	0.76-0.96 (1.0-1.25)	
Hoe (Rear)	Coral	415F2-430F2	305-762 (12-30)	0.06-0.19 (0.08-0.25)	
	Ditch Cleaning	All	1219-1524 (48-60)	0.37-0.57 (0.48-0.74)	
	Heavy Duty	All	305-914 (12-36)	0.08-0.44 (0.1-0.57)	
	Heavy Duty Rock	415F2-430F2	305-914 (12-36)	0.07-0.33 (0.09-0.43)	
	Mud Buckets	415F2-430F2	1200-1500 (47-60)	0.41-0.52 (0.54-0.68)	
	Soil Excavation	415F2-430F2	457-914 (18-36)	0.18-0.38 (0.23-0.5)	
	Standard Duty	415F2-430F2	305-914 (12-36)	0.08-0.29 (0.1-0.38)	
High Capacity	415F2-430F2	305-914 (12-36)	0.13-0.46 (0.17-0.60)		



## Cold Planers

	Model	Drum Width		Number of Bits (conical)
		mm	(in)	
PC404	415F2-430F2	450	(18)	48



## Couplers

	Model	Weight	
		kg	(lb)
Loader	IT	All	117-227 (390-500)
Hoe	Dual Lock	415F2-430F2	87 (195)
	Pin Lock	415F2-430F2	80-109 (176-240)
	Pin Puller	All	95-118 (210-260)



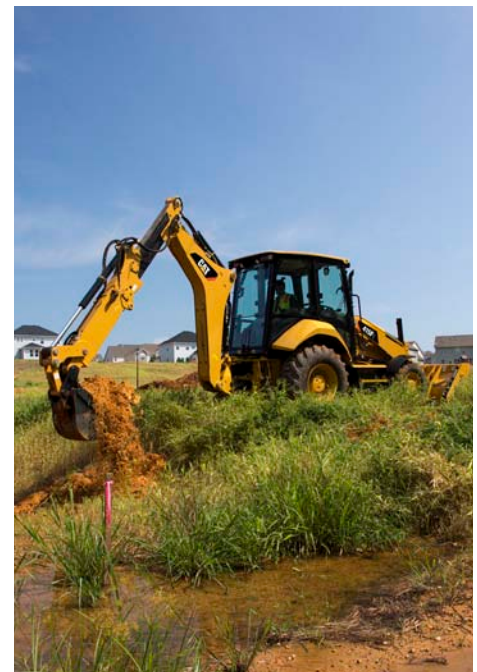
## Cutters

	Model	Cut Wheel Diameter		Weight	
		mm	(in)	kg	(lb)
Mechanical Asphalt	All	470	(19)	193	(425)



## Forks

	Model	Tine Length		Tine Width	
		mm	(in)	mm	(in)
Fold Over	All	1067	(42)	80	(3.2)
Pallet	All	1067-1372	(42-54)	127	(5.0)



## BEYOND YOUR PURCHASE...

As with all Cat equipment, you can expect complete care and service all through the life of your new Work Tool attachment.

Continued →

# Backhoe Loaders continued

415F2 416F2 420F2 430F2 450F



## Hammers

	Model	Operating Weight*		Blow Rate blows/min	Tool Diameter	
		kg	(lb)		mm	(in)
H65E/H65Es Flat-Top	416F2-430F2	260-390	(573-860)	720-1740	68	(2.68)
H75Es	416F2-430F3	500	(1013)	840-1650	74.5	(2.93)
H95Es	416F2-450F	730	(1610)	700-1260	87.5	(3.44)
H110Es	450F	1080	(2381)	450-1000	99.5	(3.92)

\* Maximum



Click or scan above to see H75Es Hammers in action!



## Material Handling Arms

	Model	Retracted Length		Extended Length	
		mm	(in)	mm	(in)
Extendible	All	2007	(79)	3937	(155)



## Plows

	Model	Cutting Width		Height	
		mm	(in)	mm	(in)
Reversible, Trip Edge	All	3099-3708	(122-146)	940-1143	(37-45)



Click or scan above to see H95Es Hammers in action!



## Rakes

	Model	Raking Width		Tooth Spacing	
		mm	(in)	mm	(in)
Loader	All	2108	(83)	330	(13)



## Rippers

	Model	Shank Length		Weight Range	
		mm	(in)	kg	(lb)
Hoe	All	696-744	(27-29)	160-199	(353-438)



## Snow Push



	Model	Moldboard Sections	Intake Width		Coupler Interface
			mm	(in)	
10 ft – Standard	420F2/430F2	4	3061	(121)	IT
12 ft – Standard	420F2/430F2	5	3823	(151)	IT
14 ft – Standard	420F2/430F2	6	4858	(181)	IT
12 ft – Industrial	430F2/450F	4	3286	(129)	IT

## Thumbs

	Model	Rotation Angle
		degrees
Hydraulic	All	105
Stiff Link	415F2-430F2	90



## Vibratory Plate Compactors

	Model	Impulse Force		Cycles/min	Base Plate Width	
		kN	(lbf)		mm	(in)
CVP40	All	40	(8928)	2200	584	(23)



# Forest Machines

320D FM 324D FM 325D FM 568 FM



## Forestry Grapples

Log Loading Grapples	Model	Weight		Jaw Opening	
		kg	(lb)	mm	(in)
	GLL52B All	1252	(2760)	1321	(52)
	GLL55B All	1298	(2861)	1397	(55)
	GLL60B All	1245	(2964)	1524	(60)



## Harvester Heads

Model	Weight	Max. Dia. Cut	Std. Feed Speed	Std. Feed Force	
				kN	(lb-f)
	kg (lb)	mm (in)	m/sec (ft/sec)		
HH44 DE	1542 (3400)	650 (25.5)	5.7 (18.8)	22.6	(5076)
SAT214	1370 (3020)	640 (25.0)	4.8 (15.7)	21.0	(4721)
SAT318	2486 (5481)	730 (29.0)	4.8 (16.0)	40.0	(9000)
SAT318T	2700 (5952)	730 (29.0)	4.8 (16.0)	40.0	(9000)
SAT318T SC	2782 (6133)	730 (29.0)	4.8 (16.0)	40.0	(9000)
SAT322	2486 (5481)	730 (29.0)	4.8 (15.7)	40.0	(9000)
SAT322T	2700 (5952)	730 (29.0)	4.8 (15.7)	40.0	(9000)
SAT322T SC	2782 (6133)	730 (29.0)	4.8 (15.7)	40.0	(9000)
SAT323	2530 (5578)	730 (29.0)	4.8 (15.7)	40.0	(9000)
SAT323T	2700 (5952)	730 (29.0)	4.8 (15.7)	40.0	(9000)
SAT323T SC	2782 (6133)	730 (29.0)	4.8 (15.7)	40.0	(9000)
SAT422 DB	2750 (6063)	630 (25.0)	5.8 (19.0)	28.0	(6300)
SAT223	3000 (6600)	750 (29.5)	4.8 (15.7)	45.0	(10125)
SAT223T	3545 (7800)	750 (29.5)	4.8 (15.7)	45.0	(10125)
SAT325	3580 (7893)	800 (31.5)	4.1 (13.5)	55.0	(12365)
SAT325T	4100 (9039)	800 (31.5)	4.1 (13.5)	55.0	(12365)



## Directional Felling Heads

Model	Weight		Max. Cut	Jaw Opening	
	kg	(lb)		mm	(in)
SAT420	1450	(3100)	635 (25.0)	965	(38)
SAT630	2000	(4400)	950 (38.0)	1400	(55)



# Track Feller Bunchers

521B 522B 541 2 552 2



## Felling Heads

Model	Weight (Partial Tilt)		Weight (Full Lateral Tilt)		Max. Cut	
	kg	(lb)	kg	(lb)	mm	(in)
HF201B	3200	(7054)	3669	(8090)	572	(22.5)
HF221	3783	(8340)	4182	(9220)	620	(24.4)

# Wheel Feller Bunchers

553C 563C 573C



## Felling Heads

Model	Weight (Partial Tilt)		Max. Cut	
	kg	(lb)	mm	(in)
SS-56	2973	(6554)	560	(22)
SC-57	3220	(7100)	576	(22.7)
SH-56B	3122	(6885)	560	(22)



# Site Prep Tractor

586C



## Brushcutters

	Model	Working Width		Max Cutting Diameter	
		mm	(in)	mm	(in)
BR624	586C	2440	(96)	200	(8)

## Mulchers

	Model	Working Width		Max Cutting Diameter	
		mm	(in)	mm	(in)
HM825	586C	2540	(100)	406	(16)



# Track Harvesters

501HD 521B 522B 541 2 552 2



## Harvester Heads

	Model	Weight		Max. Dia. Cut mm (in)	Std. Feed Speed m/sec (ft/sec)	Std. Feed Force	
		kg	(lb)			kN	(lb-f)
PF-48	501HD	2100	(4630)	610 (24.0)	4.3 (14.1)	33.4	(7509)
HH44 DE	521B/522B	1542	(3400)	650 (25.5)	5.7 (18.8)	22.6	(5076)
SAT214	501HD/521B/522B	1370	(3020)	640 (25.0)	4.8 (15.7)	21.0	(4721)
SAT318	521B/522B/541 2	2486	(5481)	730 (29.0)	4.8 (15.7)	40.0	(9000)
SAT318T	521B/522B/541 2	2700	(5952)	730 (29.0)	4.8 (15.7)	40.0	(9000)
SAT318T SC	521B/522B/541 2	2782	(6133)	730 (29.0)	4.8 (15.7)	40.0	(9000)
SAT322	521B/522B/541 2	2486	(5481)	730 (29.0)	4.8 (15.7)	40.0	(9000)
SAT322T	521B/522B/541 2	2700	(5952)	730 (29.0)	4.8 (15.7)	40.0	(9000)
SAT322T SC	521B/522B/541 2	2782	(6133)	730 (29.0)	4.8 (15.7)	40.0	(9000)
SAT323	521B/522B/541 2	2530	(5578)	730 (29.0)	4.8 (15.7)	42.0	(9445)
SAT323T	521B/522B/541 2	2700	(5952)	730 (29.0)	4.8 (15.7)	42.0	(9445)
SAT323T SC	521B/522B/541 2	2782	(6133)	730 (29.0)	4.8 (15.7)	42.0	(9445)
SAT422 DB	521B/522B/541 2	2750	(6063)	630 (25.0)	5.8 (19.0)	28.0	(6300)
SAT223	541 2/552 2	3000	(6600)	750 (29.5)	4.8 (15.7)	45.0	(10125)
SAT223T	541 2/552 2	3545	(7800)	750 (29.5)	4.8 (15.7)	45.0	(10125)
SAT325	541 2/552 2	3580	(7893)	800 (31.5)	4.1 (13.5)	55.0	(12365)
SAT325T	541 2/552 2	4100	(9039)	800 (31.5)	4.1 (13.5)	55.0	(12365)



## Directional Felling Heads

	Model	Weight		Max. Cut		Jaw Opening	
		kg	(lb)	mm	(in)	mm	(in)
SAT420	501HD/521B/522B	1450	(3100)	635	(25.0)	965	(38)
SAT630	521B/522B/541 2/552 2	2000	(4400)	950	(38.0)	1400	(55)

# Knuckleboom Loaders

519 529 559B 559C 569 579C



## Delimiters

	Model	Number of Knives	Weight		Throat Opening	
			kg	(lb)	mm	(in)
320	529/559B/559C/569/579C	3	3039	(6700)	787	(31)
426	529/559B/559C/569/579C	4	3402	(7500)	873	(34)



## Forestry Grapples

	Model	Weight		Jaw Opening	
		kg	(lb)	mm	(in)
Medium Duty Log	4042SN-R25	519/529	422 (930)	1080	(42.5)
Heavy Duty Log	4045TW-R50	529/559B/559C/569/579C	665 (1465)	1143	(45.0)
	4548SN-R50	559B/559C/569/579C	631 (1390)	1219	(48.0)
	5055TW-R50	559B/559C/569/579C	810 (1785)	1397	(55.0)
Grapple Saw	GS4548SN-R50	559B/559C/569/579C	726 (1600)	1219	(48.0)
Pipehandler Grapple	569	1134	(2500)	985	(38.8)

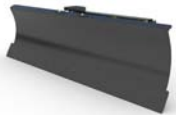
# Wheel Loaders (Compact)

903C 907H2 910K  
906H2 908H2 914K



## Augers

	Model	Drive Shaft Torque @ Max Pressure		Drive Method
		Nm	(lbf ft)	
A14B	906H2-908H2	2304	(1700)	Direct
A19B	906H2-908H2	4122	(3040)	Single Planetary
A26B	908H2	6826	(5034)	Double Planetary



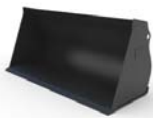
## Blades

	Model	Width		Height	
		mm	(in)	mm	(in)
Angle	914K	2667-3099 (105-122)		762-1041 (30-41)	
Straight	914K	2438	(96)	1321	(52)



## Brooms

	Model	Sweeping Width		Brush Diameter		
		mm	(in)	mm	(in)	
Angle	BA118C	906H2-908H2	2119	(83)	815	(32)
	BA22	906H2-908H2	2200	(87)	700	(28)
	BA25	910K/914K	2500	(98)	700	(28)
Pick Up	BP22	906H2-908H2	2200	(87)	700	(28)
	BP25	910K/914K	2500	(98)	700	(28)
Special Application	2.5	910K/914K	2500	(98)	915	(36)
Utility	BU115	906H2-908H2	1510	(59)	660	(26)
	BU118	906H2-908H2	1865	(73)	660	(26)



## Buckets

	Model	Width Range		Capacity Range	
		mm	(in)	m <sup>3</sup>	(yd <sup>3</sup> )
Coal	910K	2819	(111)	2.5	(3.25)
Fertilizer	910K	2159	(85)	1.8/2.2	(2.38/2.88)
General Purpose	All	1880-2413 (74-95)		0.76-1.38 (1.0-1.80)	
Light Material	903C-908H2	1940/2050 (76/81)		1.2/1.5 (1.6/2.0)	
Material Handling	910K/914K	2184-2540 (86-111)		1.7-2.5 (2.25-3.25)	
Multi-Purpose	All, except 903C	1880-2413 (74-95)		0.76-1.6 (1.0-2.1)	
Side Dump	910K/914K	2388-2743 (94-108)		1.0-1.5 (1.25-2.00)	
Industrial Grapple	906H2-908H2	2080	(81)		
Woodchip	910K/914K	3099	(122)	3.4-3.8	(4.5-5.0)



## Cold Planers

	Model	Drum Width		Number of Bits
		mm	(in)	(conical)
PC104B	906H2-908H2	350	(14)	42
PC205B	906H2-908H2	450	(18)	48
PC305B	906H2-908H2	450	(18)	48
PC306B	906H2-908H2	600	(24)	60
PC310B	906H2-908H2	1000	(40)	78

## Couplers

	Model	Weight	
		kg	(lb)
Horizontal Pin Lock	914K	181	(400)

## Cutters

	Model	Cut Wheel Diameter		
		mm	(in)	kg (lb)
Mechanical Asphalt	910K/914K	470	(19)	193 (425)



## Forks

	Model	Tine Length		Carriage Width	
		mm	(in)	mm	(in)
Log & Lumber	910K/914K	1219/1524	(48/60)	1829/2184	(72/86)
Log & Lumber w/top clamp	914K	1219	(48)	1778	(70)
Pallet	All	1050-1829	(41-72)	1397/1550	(55/61)

## Material Handling Arms

	Model	Width w/side step		Load Length-end	
		mm	(in)	mm	(in)
Fixed Length	906H2-908H2	1309	(52)	768	(30)
	Model	Retracted Length		Extended Length	
		mm	(in)	mm	(in)
Extendible	910K/914K	2438/2007(96/79)		4039/3937 (159/155)	

Continued —



# Wheel Loaders (Compact) continued

903C 907H2 910K  
906H2 908H2 914K



	Model	Cutting Width		Height	
		mm	(in)	mm	(in)
One-Way	914K	2642	(104)	1702	(67)
Reversible	910K/914K	3658/3226	(144/127)	1270/1143	(50/45)
V-Plow	910K/914K	2642	(104)	2007	(79)



	Model	Working Width		Bucket Capacity	
		mm	(in)	m <sup>3</sup>	(yd <sup>3</sup> )
<b>Rakes</b>					
<b>Landscape Rakes</b>					
LR15B	906H2-908H2	1576	(62)	0.3	(0.39)
LR18B	906H2-908H2	1883	(74)	0.34	(0.44)
<b>Power Box Rakes</b>					
PR172	908H2	1829	(72)	20	
PR184	908H2	2134	(84)	20	
PR190	908H2	2286	(90)	20	



	Model	Intake Width		Throw Distance	
		mm	(in)	m	(ft)
SR118	906H2-908H2	1854	(73)	12.2	(40)
SR121	906H2-908H2	2159	(85)	12.2	(40)
SR318	906H2-908H2	1854	(73)	13.7	(45)
SR321	906H2-908H2	2159	(85)	13.7	(45)



	Model	Moldboard Sections	Intake Width		Coupler Interface
			mm	(in)	
10 ft – Standard	906H2-908H2	4	3061	(121)	SSL
12 ft – Standard	906H2-908H2	5	3823	(151)	SSL
14 ft – Standard	906H2-908H2	6	4585	(181)	SSL
12 ft – Industrial	910K/914K	4	3286	(129)	IT
14 ft – Industrial	910K/914K	5	4096	(161)	IT



	Model	Width		Length	
		mm	(in)	mm	(in)
SG16B	906H2-908H2	1175	(46)	1737	(69)



	Model	Working Width		Working Depth	
		mm	(in)	mm	(in)
LT13B	906H2-908H2	1321	(52)	25-152	(1-6)
LT18B	906H2-908H2	1854	(73)	25-152	(1-6)



	Model	Overall Width		Working Depth	
		mm	(in)	mm	(in)
T6B	906H2-908H2	1426	(56)	914	(36)
T9B	906H2-908H2	1901	(75)	1219	(48)
T15B	906H2-908H2	1901	(75)	1524	(60)



	Model	Drum Width		Dynamic Force	
		mm	(in)	kg	(lb)
CV16B	906H2-908H2	1676	(66)	5399	(11903)
CV18B	906H2-908H2	1854	(73)	5399	(11903)



	Model	Wheel Width		Number of Bits (conical)
		mm	(in)	
SW345B	906H2-908H2	80	(3)	64



# Wheel Loaders (Small)

926M 930M 938M



## Brooms

	Model	Sweeping Width		Brush Diameter		
		mm	(in)	mm	(in)	
<b>Angle</b>	BA25	926M/930M	2500	(98)	700	(28)
	BA30	938M	3000	(118)	915	(36)
<b>Pick Up Brooms</b>	BP25	926M/930M	2500	(98)	700	(28)
<b>Special Application</b>	2.5	926M/930M	2500	(98)	915	(36)
	3.0	938M	3000	(118)	915	(36)



## Buckets

	Model	Width Range		Capacity Range	
		mm	(in)	m <sup>3</sup>	(yd <sup>3</sup> )
General Purpose Performance Series	All	2550-3060	(100-120)	3.00-5.00	(4.00-6.50)
Grading	All	2700	(106)	1.80/1.90	(2.40/2.50)
Grapple	All	2697	(106)	2.50-2.90	(3.30-3.80)
High Dump	All	2550-3060	(100-120)	3.00-5.00	(4.00-6.50)
Light Material	All	2750	(108)	3.10-5.00	(4.00-6.50)
Sand & Gravel	All	2750	(108)	2.50-3.20	(3.30-4.10)
Side Dump	All	3105	(122)	1.70/1.90	(2.30/2.50)
Waste Handling	All	3059	(120)	3.60-4.00	(4.70-5.20)
Waste Load & Carry	All	2743/2927	(108/115)	4.6/5.2	(6.00/6.75)
Waste Dozing	All	2743/2927	(108/115)	4.2/4.6	(5.50/6.00)
Woodchip	All	3330	(131)	4.90-5.50	(6.40-7.20)



## Couplers

	Model	Weight	
		kg	(lb)
Fusion™	All	252-392	(556-865)



## Cutters

	Model	Cut Wheel Diameter		Weight
		mm	(in)	kg (lb)
Mechanical Asphalt	All	470	(19)	193 (425)



## Forks

	Model	Tine Length		Carriage Width	
		mm	(in)	mm	(in)
Construction	All	1524/1829	(60/72)	2440	(96)
Log & Lumber	All	1219-1829	(48-72)	1839/2134	(72/84)
Millyard Pole	938M	1378	(54)	2211	(87)
Pallet	All	1220-1524	(48-60)	1524	(60)
Pipe & Pole	930M /938M	1829	(72)	2693	(106)



## Material Handling Arms

	Model	Retracted Length		Extended Length	
		mm	(in)	mm	(in)
Extendible	All	2760	(109)	4137	(163)



## Plows

	Model	Cutting Width		Height	
		mm	(in)	mm	(in)
Reversible	All	3696/4265	(146/168)	1034/1268	(41/50)



## Rakes

	Model	Raking Width		Tooth Spacing	
		mm	(in)	Teeth	mm (in)
Loader	All	2495	(98)	8	349 (13.8)
Loader, w/Top Clamp	All	2146/2844	(85/112)	7/9	349 (13.8)



## Snow Push

	Model	Moldboard Sections	Intake Width		Coupler Interface
			mm	(in)	
12 ft – Industrial	All	4	3286	(129)	IT /Fusion
14 ft – Industrial	All	5	4096	(161)	IT /Fusion
16 ft – Industrial	All	6	4915	(194)	IT /Fusion

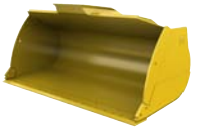
# Wheel Loaders (Medium)

950M 966M 972M 980M  
962M 966M XE 972M XE 982M



## Brooms

		Model	Sweeping Width		Brush Diameter	
			mm	(in)	mm	(in)
<b>Angle</b>	BA30	950M/962M	3000	(118)	915	(36)
<b>Special Application</b>	3.0	950M/962M	3000	(118)	915	(36)



## Buckets

	Model	Width Range		Capacity Range*	
		mm	(in)	m <sup>3</sup>	(yd <sup>3</sup> )
Coal Performance Series	966M-982M	3447/3638	(136/143)	7.81-9.68	(10.18-12.65)
General Purpose Performance Series	All	2894-3568	(114-141)	2.97-7.04	(3.85-9.08)
General Purpose Abrasion Performance Series	982M	3568	(141)	7.04-9.02	(9.08-11.83)
Grapple	950M-972M	3048/3059	(120)	3.80-4.60	(8.00-6.00)
Heavy Duty General Purpose Performance Series	982M	3608	(142)	6.71-8.25	(8.80-10.73)
Heavy Duty Material Handling Performance Series	982M	3608	(142)	7.04-7.7	(9.08-10.18)
Heavy Duty Rock	966M/972M	3251	(128)	3.60-4.00	(4.75-5.25)
Heavy Duty Quarry Rock	980M/982M	3505-3647	(138-144)	4.40-5.80	(5.75-7.50)
High Dump	950M-972M	2910/3059	(115/120)	4.60-6.10	(6.00-8.00)
Material Handling Performance Series	All	2894-3568	(114-141)	2.97-7.04	(3.85-9.08)
Multi-Purpose	950M-972M	2943/3226	(116/127)	2.90-3.10	(3.75-4.00)
Rock Performance Series	All	2969-3647	(117-144)	2.97-5.94	(3.85-7.70)
Side Dump	950M-972M	3220/3677	(127/145)	2.90-3.60	(3.75-4.75)
Slag	972M/980M	3250/3394	(128/134)	3.40/3.80	(4.50/5.00)
Waste Handling	950M-972M	3059-3323	(120-131)	5.20-6.50	(6.75-8.50)
Waste Dozing	All	3059-3882	(121-153)	5.20-10.20	(6.75-13.25)
Waste Load & Carry	950M-980M	3059-3882	(121-153)	6.10-10.70	(8.00-14.00)
Woodchip	950M-980M	3327-4166	(131-164)	9.20-11.50	(12.00-15.00)

\* Performance Series Bucket capacities are calculated with a 110% fill factor. All other bucket capacities are calculated based on SAE.



Click or scan above to see Performance Series Buckets in action!



Click or scan above to see the Fusion Coupler in action!



## Couplers

	Model	Weight	
		kg	(lb)
Fusion™	950M-972M	564/566	(1244/1248)



## Forks

	Model	Tine Length		Carriage Width	
		mm	(in)	mm	(in)
Log & Lumber	950M-972M	1219-2438	(48-96)	2428/2502	(96/99)
Log & Lumber w/ Top Clamp	950M/962M	1219	(48)	1923	(76)
Logging	950M/962M	1626/1829	(64/72)	2286-2743	(90-108)
Millyard	950M-972M	1626-1677	(64-66)	2184-2413	(86-95)
Millyard Pole	950M-972M	1677	(66)	2184	(86)
Pallet	950M-972M	1219-2438	(48-96)	2134-2845	(84-112)
Pipe & Pole	950M-972M	1829/2438	(72/96)	2743/3124	(108/123)
Sorting Grapple	950M-972M	1220	48	1850/1943	(73/77)
Unloading Grapple	950M/962M	762/917	(30/36)	1832/1850	(72/73)



## Material Handling Arms

	Model	Retracted Length		Extended Length	
		mm	(in)	mm	(in)
Extendible	950M-972M	3061	(120)	4585	(180)



## Plows

	Model	Cutting Width		Height	
		mm	(in)	mm	(in)
Reversible	950M-980M	4235-4953	(167-195)	1025-1287	(40-50)
V-	950M-972M	3069/3234	(120/126)	2070/2129	(82/84)



## Rakes

	Model	Raking Width		Tooth Spacing	
		mm	(in)	Teeth	mm (in)
Loader	950M-972M	2844/3156	(112/124)	9	349/387 (13.8/15.2)
Loader, w/ Top Clamp	950M-972M	2844/3156	(112/124)	9	349/387 (13.8/15.2)



# Wheel Loaders (Large)

986H 988K 990K 992K 993K 994H



## Buckets

	Model	Width Range		Capacity Range	
		mm	(in)	m <sup>3</sup>	(yd <sup>3</sup> )
Coal	988K-994H	4115-6299	(162-248)	11.5-35.9	(15.0-47.0)
Extreme Duty Rock	986H	4146	(163)	5	(6.5)
General Purpose Performance Series	986H/988K	3695/3855	(145/152)	6.1/8.4	(8.0/11.0)
Heavy Duty Rock Performance Series	986H-990K	4014-4670	(158-184)	5.4-8.6	(7.0-11.3)
Heavy Duty Rock	992K/994H	5080/5650	(200/222)	10.7/17.0	(14.0/22.5)
Heavy Duty Granite Performance Series	988K/990K	3986/4634	(157/182)	6.4/8.6	(8.3/11.3)
Heavy Duty Granite	992K/993K	5156	(203)	10.7-13.0	(14.0-17.0)
High Abrasion	992K/993K	5080-5156	(200/203)	10.7-13.0	(14.0-17.0)
Iron Ore	988K-993K	3937-5156	(155-203)	4.4-9.9	(5.8-13.0)
Rock Performance Series	986H-990K	3812-4610	(150-182)	6.1-10.0	(8.0-13.0)
Rock	992K-994H	4824-5639	(190-245)	10.7-19.1	(14.0-25.0)
Rock - Block Handling	988K	3836/4013	(151/158)	6.9	(9.0)
Serrated Edge	986H-993K	3812-6223	(150-200)	6.1-15.3	(8.0-20.0)
Slag	988K/990K	3900-4708	(154-185)	5.4-9.2	(7.0-12.0)



## Couplers

	Model	Weight	
		kg	(lb)
Block Handling	988K	1440	(3175)



## Forks

	Model	Tine Length		Carriage Width	
		mm	(in)	mm	(in)
Block Handling	988K	1803	(71)	2083	(82)
Logging	988K	2489	(98)	2769	(109)
Pallet	988K/992K	1829-2743	(72-108)	2794-3099	(110-122)

# Track Loaders

953D 963D 973D



## Blades

	Model	Width		Height	
		mm	(in)	mm	(in)
Straight Trim	All	3150-3480	(124-137)	839-1143	(35-45)



## Buckets

	Model	Width Range		Capacity Range	
		mm	(in)	m <sup>3</sup>	(yd <sup>3</sup> )
General Purpose	All	2362-2925	(93-115)	1.82-3.25	(2.38-4.25)
Multi-Purpose	All	2438-3403	(96-134)	1.91-4.40	(2.50-5.75)
Side Dump	963D/973D	2743/3429	(108/135)	1.91/2.29	(2.50/3.00)



## Couplers

	Model	Weight	
		kg	(lb)
Fusion™	963D	641	(1413)
Horizontal Pin Lock	All	313-490	(690-1080)



## Forks

	Model	Tine Length		Width Over Tine	
		mm	(in)	mm	(in)
Pallet	All	(1219-2438)	(48-96)	432-2337	(17-92)



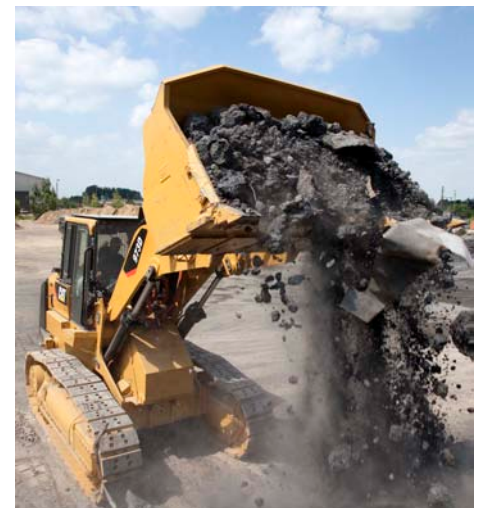
## Material Handling Arms

	Model	Retracted Length		Extended Length	
		mm	(in)	mm	(in)
Extendible	All	2438	(96)	4648	(183)



## Rakes

	Model	Raking Width		Teeth	Tooth Spacing	
		mm	(in)		mm	(in)
Loader	963D	2388	(94)	7	330	(13)



# Telehandlers

TH255C TH406C TH407C TH514C TL642C TL943C TL1055C TL1255C



## Bale Handler

	Model	Width		Capacity	
		mm	(in)	kg	(lb)
Bale Handler	TH406C/TH407C	1219	(48)	415	(915)



## Buckets

	Model	Width Range		Capacity Range	
		mm	(in)	m <sup>3</sup>	(yd <sup>3</sup> )
General Purpose	All	1854-2445	(73-96)	0.76-1.0	(1.0-1.3)
Grapple	TH255C	1854-2330	(73-92)	0.76-.85	(1.0-1.11)
Light Material	TH255C / TH406C / TH407C	1445-2500	(57-98)	1.3-3.0	(1.7-3.9)
Material Handling	All, except TH255C / TH514C	2418	(95)	1.5	(1.95)
Multi Purpose	All, except TH514C	1829-2418	(72-95)	0.37-1.0	(0.48-1.3)



## Carriages

	Model	Width	
		mm	(in)
Carriages – standard, wide, rotating, side-shift, side tilt	All	1220-1850	(48-74)
Carriages – swing	All, except TH255C / TH514C	1829	(72)



## Forks

	Model	Tine Length	
		mm	(in)
Block (Cubing)	All	1220	(48)
Pallet	All	1219/1524	(48/60)
Lumber	All	1524/1829	(60/72)
Manure Fork and Grapple	TH406C/TH407C	2290	(90)



## Fork Mounted Work Platform

	Model	Width		Capacity	
		mm	(in)	kg	(lb)
Work Platform	Work Platform	1219	(48)	454	(1000)



## Lifting Hooks

	Model	Rated Load Capacity Range	
		kg	(lb)
Fork Mounted	All	2500-5443	(5500-12000)
IT Coupler	All, except TH255C	2948-4536	(6500-10000)



## Material Handling Arms

	Model	Extension	
		mm	(in)
Material Handling Arm	All, except TH406C / TH407C / TL642C	2135/4162	84/164



## Truss Booms

	Model	Length		Rated Capacity	
		mm	(in)	kg	(lb)
Truss Boom	All, except TH255C	4000	(157.5)	500	(1102)



## Winch – Boom Mounted

	Model	Line Length		Capacity	
		m	(ft)	kg	(lb)
Winch	TL642C-TL1255C	23	(75)	1360	(3000)



## BEYOND YOUR PURCHASE...

You can be assured of a common approach to parts availability and quality of service, regardless of where the job takes you and your equipment.

# Wheel Dozers

814F2    824K    834K    844K    854K



	Blades	Model	Width		Capacity	
			mm	(in)	m <sup>3</sup>	(yd <sup>3</sup> )
Coal U-	814F2	4318	(170)	10.7	(14)	
	824K	4801	(189)	16.1	(21)	
	834K	5766	(227)	22.2	(29)	
	844H	5846	(230)	30.7	(40.2)	
	854K	7200	(284)	44.7	(58.2)	
Semi U-	834K	4699	(185)	10.2	(13.3)	
	844H	5418	(213)	16.1	(21.1)	
	854K	6321	(249)	25.4	(33.1)	
Woodchip U-	824K	4775	(188)	23.7	(31)	
	834K	5766	(227)	30.6	(40)	



	Scoops	Model	Width		Doze Capacity	
			mm	(in)	m <sup>3</sup>	(yd <sup>3</sup> )
Coal	824K	4039	(159)	26.8	(35)	
	834K	4877	(192)	45.9	(60)	
Woodchip	824K	4089	(161)	41.3	(54)	
	834K	4877	(192)	53.5	(70)	



# Landfill Compactors

816F2    826K    836K



	Blades	Model	Width		Capacity	
			mm	(in)	m <sup>3</sup>	(yd <sup>3</sup> )
Landfill	816F2	3810	(150)	12.2	(16)	
	826K	4394	(173)	17.5	(23)	
Semi U-	816F2	3810	(150)	9.2	(12)	
	826K	4521	(178)	16	(20.9)	
	836K	5313	(209)	22.4	(29.3)	
Straight	816F2	3658	(144)	10.7	(14)	
	826K	4496	(177)	12.3	(16.1)	
	836K	5182	(204)	20	(25.9)	



## BEYOND YOUR PURCHASE...

With more dealer locations around the globe, you can be sure you or your operator is never very far from Cat parts, service and sales expertise.

# Track Type Tractors

D3K2 D4K2 D5K2 D6K2 D6N D6T D7E D8T D9T D10T2 D11T



Blades	Model	Width		Capacity	
		mm	(in)	m <sup>3</sup>	(yd <sup>3</sup> )
Angle	D7E	4470	(176)	4.6	(6.0)
Coal U-	D7E-D11T	4902-8179	(193-322)	14.8-74.9	(19.4-98.0)
Landfill U-	D8T	2436	(214)	23.7	(31.0)
Reclamation U-	D9T-D11T	4674-7290	(184-287)	10.4-53.5	(31.6-70.0)
Semi U-	D6T/D7E	4267/4521	(168/178)	6.9/7.9	(9.0/10.3)
Woodchip U-	D7E-D10T2	4902-6731	(193-265)	25-72.6	(32-95.0)



Winches	Model	Weight		Speed
		kg	(lb)	
PA40	D3K2-D5K2	610	(1345)	Variable
PA50	D6K2	907	(2000)	Variable

# Motor Graders

120M2 12M3 140M3 160M3 14M 16M



Blades	Model	Width		Height	
		mm	(in)	mm	(in)
Angle	14M	3835	(151)	978	(39)
Straight	14M-16M	3048-3327	(120-131)	1321-1448	(52-57)



Parallel Lift Groups	Model	Weight	
		kg	(lb)
Parallel Lift Groups	14M-16M	930-1419	(1827-3128)



Scarifiers	Model	Working Width		
		mm	(in)	Teeth
Front V-Type	14M	1260	(50)	5/11



Plows	Model	Cutting Width		Height	
		mm	(in)	mm	(in)
One-Way	14M	3505	(138)	1676	(66)
Reversible	14M	4267-4572	(168-180)	1219	(48)
V-	14M	3200	(126)	2286	(90)



Snow Wings	Model	Length		Height	
		mm	(in)	mm	(in)
Snow Wings	120M2-14M	3658/4267	(144/168)	965/1018/1053	(38/40/42)



GEDQ0300-04 (01-15)

For more complete information on Cat products, dealer services, and industry solutions, visit us on the web at [www.cat.com](http://www.cat.com)

©2015 Caterpillar  
All Rights Reserved

Materials and specifications are subject to change without notice. Featured machines in photos may include additional equipment. See your Cat dealer for available options.

CAT, CATERPILLAR, their respective logos, "Caterpillar Yellow," and the POWER EDGE trade dress, as well as corporate and product identity used herein, are trademarks of Caterpillar and may not be used without permission.

