

Small Wheel Loader Waste Handlers

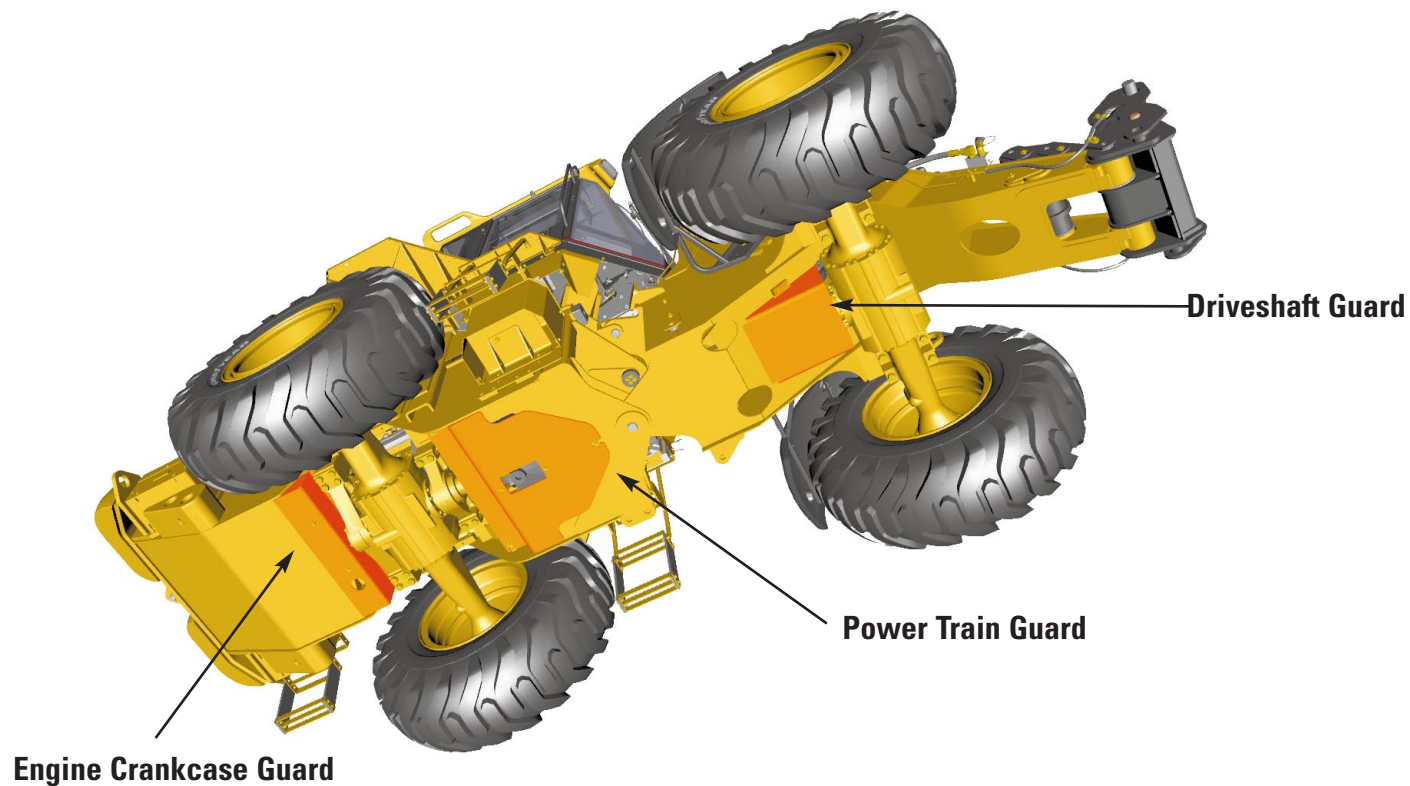


Supplement

Note: For standard specifications and features, refer to the standard Caterpillar® specalog for this machine. Featured machines may include additional equipment (which may change) applicable only for special applications. See your Caterpillar dealer for available options.

	924G/924G HL	924Gz	928G	IT28G
Loader Bucket Capacities	1.7-5.0 m ³	1.7-2.1 m ³	2.0-2.2 m ³	1.5-3.5 m ³
	2.2-6.5 yd ³	2.2-2.75 yd ³	2.5-2.9 yd ³	2.0-4.5 yd ³
Operating weight	11 500 kg	10 940 kg	12 287 kg	12 476 kg
	25,358 lb	24,125 lb	27,093 lb	27,510 lb
Cat® 3056T (924G)/3116T (928G) Engine				
Gross Power	91 kW (122 hp)	91 kW (122 hp)	102 kW (137 hp)	102 kW (137hp)
Flywheel Power	85 kW (114 hp)	85 kW (114 hp)	93 kW (125 hp)	93 kW (125 hp)

924G/Gz Guarding



Axle Guards (Standard) protect axle seals on each wheel from material that could wrap around the axle and damage the seal.

Engine Crankcase Guard, Driveshaft Guard, and Power Train Guard protect components and prevent debris entry.

Guarding

Protects your investment.

- 1 Light Guards** protect the front work lights from debris that could potentially damage or break lenses. Rear light guards are also available on the 928G/IT28G.



- 2 Heavy Duty Radiator Guard** is a bolt-on guard providing additional protection for the rear cooling fan and radiator when working in severe applications or maneuvering in confined areas.



- 3 G-Series Cab Windshield Guard** offers added protection to the windshield and the operator. The guard will help deflect debris projected toward the cab during machine operation. The windshield guard design allows good visibility to the ground and the work tool.



Small Wheel Loader Waste Handlers

Ideal for waste applications where conditions call for a rugged, reliable wheel loader to handle a wide range of jobs.

The Caterpillar 928G, IT28G, 924Gz, 924G, and 924G High Lift Small Wheel Loader Waste Handlers are part of a line of industry exclusive, factory offered waste handler arrangements developed specifically for use in waste transfer stations, recycling centers and waste-to-energy plants. These arrangements provide value-added features which protect machine components, reduce debris entry and allow fast and easy cleaning.



Guarding Arrangements

The Small Wheel Loader guarding package reduces trash buildup, and helps extend machine life.

Optional Waste Handler Arrangements:

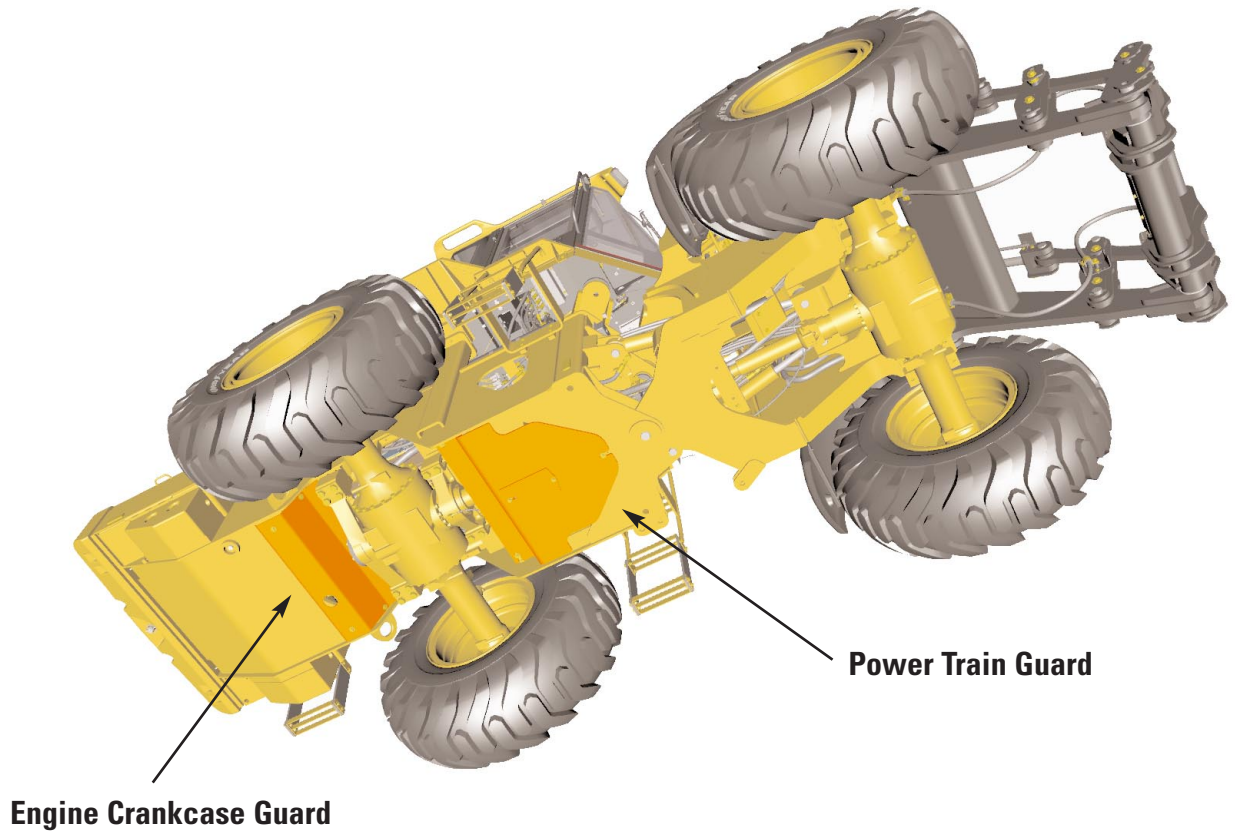
924G and 924G High Lift
924Gz
928G/IT28G

Waste Handler Arrangement includes:

- Radiator Guard
- Front Windshield Guard
- Power Train Guard
- Drive Shaft Guard (924G/924Gz only)
- Crankcase Guard
- Front Light Guards
- Rear Light Guards (928G/IT28G only)
- *Waste Handler Decal*



928G/IT28G Guarding



Axle Guards (Optional Factory or Field Installed Kit) protect axle seals on each wheel from material that could wrap around the axle and damage the seal.

Engine Crankcase Guard and Power Train Guard protect components and prevent debris entry.

Optional Attachments

Choosing the proper options can increase versatility, durability, productivity and ease of maintenance.

Reversing Fan is used to reverse flow of air to purge debris from the radiator and the screens. A switch on the right console in the cab controls reverse actuation. Available from the factory and as a field installed kit.

Fine Steel Mesh Screens (928G/IT28G) have vertical ribs that allow debris which may have collected during operation to fall away when the engine is shut off. The air screens help keep the cooling system cleaner and more efficient, while reducing radiator cleaning intervals. Available as field installed retrofit kit only. Standard on 924G.



X Mine D2 Tires

The ultra-deep L5 tread with massive buttressed shoulders and sidewalls provide resistance to damage in severe conditions. The combination of multiple steel belts, cut-resistant rubber compounds and a heavy-duty casing means fewer flats. X Mine D2 tires reduce the need for expensive foam/poly fill or chains.

Tire Selection:

17.5-R25 Xmine D2 L5—924G

20.5-R25 Xmine D2 L5—IT28G/928G

Limited Slip Differentials Front and Rear

For the best four-wheel drive performance. Limited Slip Differentials reduce tire scuffing and unnecessary wear.

Operation Specifications

	924G (HO)*	924G (PO)**	924G HL (HO)*	924G HL (PO)**	924Gz	928G	IT28G
Operating weight	10 360 kg 22,792 lb	10,238 kg 22,524 lb	10 467 kg 23,027 lb	10,346 kg 22,761 lb	10 940 kg 24,125 lb	12 287 kg 27,093 lb	12 476 kg 27,510 lb
40° Full turn static tipping load	6507 kg 14,315 lb	6875 kg 15,125 lb	5268 kg 11,590 lb	5557 kg 12,225 lb	6886 kg 15,149 lb	8020 kg 17,684 lb	7335 kg 16,174 lb
Breakout force	9956 kg 21,903 lb	11,452 kg 25,195 lb	9956 kg 21,903 lb	11,445 kg 25,180 lb	9876 kg 21,727 lb	11 723 kg 25,849 lb	810 631 kg 23,441 lb
Dump clearance 45° discharge	2760 mm 9' 1"	2850 mm 9' 4"	3267 mm 10' 9"	3358 mm 11' 0"	2760 mm 9' 1"	2879 mm 9' 5"	2911 mm 9' 7"
Lift arms horizontal and bucket level	2370 mm 7' 9"	2230 mm 7' 4"	2761 mm 9' 1"	2621 mm 8' 7"	2133 mm 7' 0"	2253 mm 7' 5"	2383 mm 7' 10"

*(HO) = hook-on

** (PO) = pin-on

Note: 924G, 924G High Lift, and 924Gz data calculated with a 1.8 m³/2.3 yd³ GP bucket. 928G and IT28G data calculated with 2.0 m³/2.6 yd³ GP bucket. Specifications shown for 924G/Gz and 924G High Lift are with optional counterweight, standard lubricants, full fuel tank, ROPS cab, 80 kg (176 lb) operator and 17.5-25 12 PR (L2) tires. Specifications shown for 928G/IT28G are with optional counterweight, standard lubricants, full fuel tank, ROPS cab, 80 kg (176 lb) operator and 20.5-25 12 PR (L2) tires.

AEHQ9043 (03-01)

www.CAT.com
© 2001 Caterpillar
Printed in U.S.A.

CATERPILLAR®