

KELLY TRACTOR

www.kellytractor.com/forklifts

KELLY TRACTOR

TOTAL LOGISTIC SOLUTIONS

MIAMI (HEADQUARTERS)

8205 NW 58 St
Miami FL 33166
305-592-5379

DAVIE

2801 Reese Rd
Davie FL 33314
954-581-8181

FORT MYERS

9651 Kelly Tractor Dr
Fort Myers FL 33905
239-693-9233

ORLANDO

Cranes and Forklifts only
144 W. Landstreet Rd.
Orlando FL 32824
407-568-8055

WEST PALM BEACH

5460 Okeechobee Blvd
West Palm Beach FL 33417
561-683-1231

Your materials handling partner to keep your business performing at its best.



KELLY TRACTOR



Serving the industry since 1933

Since 1933, when Pop E. Kelly founded the company in Clewiston, FL, where he was well known for "honest and fair dealings," our industrial division has worked hard to provide the very best logistical products backed by dedicated employees who strive to offer the best customer experience.

With several locations throughout South Florida, one is sure to be convenient to you to keep your industrial equipment operating at peak efficiencies.

With electric and gas powered forklifts, scissor and man lifts, hand pallet jacks, electric narrow aisle forklifts, a vast parts inventory and dedicated industrial service technicians, Kelly Tractor offers a complete logistics package for your business needs.

Pat Kelly, president, and Nick Kelly, executive vice president, have carried on a family tradition of providing quality equipment, parts and superior service.

Representing the 4th generation of Kelly family members, Chris Kelly and Katherine Kelly will maintain and enhance the family tradition of providing "honest and fair dealings" and superior customer service.



▲ Kelly Tractor Co. headquarters Miami, FL

Kelly Tractor serves its customers with a wide variety of machines from some of the world's foremost manufacturers including but not limited to: ABI hose reels, Caterpillar®, CAT® lift trucks, Challenger® farm tractors, Genie® aerial lifts, Harlo®, JLG® scissor lifts, Jungheinrich® lift trucks, IMT® drill

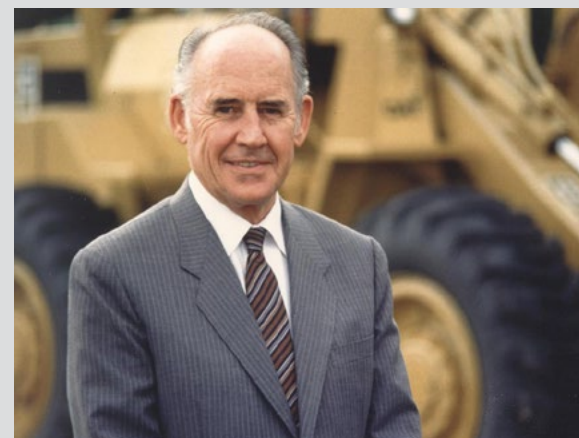
rigs, Woods Equipment, Landoll® truck lifts, Link-Belt® cranes, Marden Industries, Massey Ferguson® AG tractors, Mauldin® paving products, RoGator®, Schulte®, Sullair®, Sullivan Palatek®, Supertrak®, TerraGator®, Wacker Neuson®, and Weiler® paving products.

Since 1933, Kelly Tractor Co. has provided rentals, leasing, sales and servicing of all types of construction and industrial equipment to the following markets: highway and bridge building, water and sewer, land development, housing, aggregate quarries, agriculture, warehousing, seaports, marinas, and more.

Kelly Tractor Co. and its affiliates employ more than 500 people in South Florida, and more than 150 of them provide parts and service support. The company is headquartered in a 240,000 square-foot complex in Miami, with branch locations in Clewiston, Davie, Fort Myers, Mulberry (IMT drill rigs), Orlando (Link-Belt cranes) and West Palm Beach.



▲ Pop E. Kelly, Founder Clewiston FL (circa 1933)



▲ Loyd Kelly, President 1953-1987



▲ Kelly Tractor Co. Forklift Division

Forklifts/Industrial Equipment New/Rental/Used

Forklift Service

Kelly Tractor offers new forklifts from Caterpillar, Jungheinrich, and Blue Giant. We also carry man lifts and aerial lifts from Genie and JLG. We offer flexible and easy term financing to assist with your materials handling needs.

We offer forklifts for rent or lease and have a wide selection of used equipment. Flexible financing options are available. Let us know if you desire to take advantage of our financing programs. We rent daily, weekly and monthly.* We maintain our rental forklifts, which receive the highest quality scheduled maintenance from our factory trained service technicians.

For more information on parts, service and product training for your fleet e-mail: forkliftrental@kellytractor.com



▲ Forklifts for sale or rent, Miami, FL

Rental facilities locations:

- Miami (headquarters)
- Davie
- Fort Myers
- West Palm Beach
- Orlando

Advantages of renting:

- Full maintenance on most rentals
- Large fleet size throughout the territory; most units under 3 years old.
- Immediate availability
- Fast service repair response time, usually within 24 hours
- "Try before you buy"
- Bilingual staff
- Rent to own programs available

**Scissor lifts minimum of 1 week rental*

We offer "Worry Free" ownership whether you own a large fleet or use our rental equipment. Our highly trained forklift and industrial technicians keep your machines operating at peak efficiencies.

The following product support services for forklift equipment are available:

- Preventative maintenance services field and shop
- Caterpillar forklift parts within 24 hours
- Qualified forklift service technicians
- Forklift industrial batteries
- Industrial battery chargers
- Manual pallet jacks
- LP gas tanks
- Used forklifts
- 5 convenient locations - Davie, Fort Myers, Miami, Orlando and West Palm Beach



▲ Factory trained technicians at your facility or at one of our 5 convenient locations

Our factory trained representatives provide superior service. Bring your machines to us, or we can come to your facility with our field service vans.

For more information about service e-mail forkliftservice@kellytractor.com



Planned Maintenance/ Fleet Management

Forklift Parts/ Product Training

PLANNED MAINTENANCE

Regularly scheduled maintenance will keep your forklift trucks in top condition. With Kelly Tractor's Planned Maintenance program, you will have the assurance that your equipment will operate efficiently and avoid unexpected downtime. Our professionally trained team will design a program to service your equipment on site based on how you use and currently maintain your equipment.



FLEET MANAGEMENT

Fleet Management adds repair services to the Planned Maintenance program to help keep your forklift trucks running efficiently at a fixed, pre-determined price. Our professional team

- Verifies each forklift truck to be covered (serial number and hours)
- Identifies how the equipment is being used and where
- Designs a maintenance schedule that is the best fit for each machine
- Establishes a fixed price with low monthly payments

Keeping your equipment in top running condition will result in less downtime, longer equipment life and the highest value should you decide to sell your forklift.



▲ More than 7,000 line items in stock



▲ Experienced staff that fulfills your needs

PARTS

Our forklift parts department carries inventories for all makes of forklifts, from Cat, Nissan, Jungheinrich, Harlo, Navigator, Yale®, Toyota®, Hyster®, Genie and JLG. We have an inventory of more than 7,000 items and we provide at least 84% parts availability from our shelves.

The inventory includes batteries, mast forks, strobe lights, hoses, LP gas tanks, electrical components, and more.

Caterpillar customers appreciate our "Parts fast Parts free" offer. If your parts are not in our warehouse in 24 hours, the parts are free of charge.

For more information, call 305-592-5379 or e-mail us at forkliftparts@kellytractor.com

TRAINING

We offer operator training at your facility or ours for your convenience! Our classes comply with OSHA standards and we also offer customized Operator Safety Training. Specific forklift training can be individualized for each

workplace environment to reduce accidents and injuries, as well as property and product damage. Training programs are available in English and Spanish.

The seven part lift truck operator training addresses key issues including:

- Lift truck fundamentals
- Pre-operational inspection
- Operating safety guidelines
- Forklift load-handling techniques
- Fueling gasoline, diesel and liquid propane forklifts
- Forklift battery changing and recharging



2,000 lbs to 36,000 lbs capacity

With load capacities ranging from 2,000 lbs to 36,000 lbs, we offer a full range of Cat® lift trucks including electric counterbalanced cushion, pneumatic tire lift, as well as internal combustion cushion forklifts.

Class 1 - Electric Counterbalanced

| Model | Capacity (lbs) | Voltage (Volts) | Turning Radius (in) | Length (in) | Width (in) | Height (in) | Weight (lbs) |
|--|----------------|-----------------|---------------------|-------------|------------|-------------|--------------|
| 3,000-4,000 lbs capacity Pneumatic Tire | | | | | | | |
| 2ET25003 | 2,500 | 48 | 56.7 | 69.9 | 41.7 | 80.4 | 5,947 |
| 2ETC3000 | 3,000 | 48 | 60.9 | 74.3 | 41.7 | 80.4 | 6,520 |
| 2ET3000 | 3,000 | 48 | 65.2 | 78.6 | 41.7 | 80.4 | 6,627 |
| 2ETC3500 | 3,500 | 48 | 60.9 | 74.3 | 44.1 | 80.4 | 7,084 |
| 2ET3500 | 3,500 | 48 | 65.2 | 78.6 | 44.1 | 80.4 | 6,957 |
| 2ET4000 | 4,000 | 48 | 65.2 | 78.6 | 44.1 | 80.4 | 7,343 |
| 3,000-4,000 lbs capacity Pneumatic Tire | | | | | | | |
| EPC3000 | 3,000 | 48 | 73.2 | 78.3 | 41.7 | 80.4 | 6,597 |
| EP3000 | 3,000 | 48 | 78.1 | 82.6 | 44.1 | 80.4 | 6,503 |
| EPC3500 | 3,500 | 48 | 73.2 | 78.3 | 44.1 | 80.4 | 6,906 |
| EP3500 | 3,500 | 48 | 78.1 | 82.6 | 44.1 | 80.4 | 6,812 |
| EP4000 | 4,000 | 48 | 78.1 | 82.6 | 44.1 | 80.4 | 7,175 |
| 3,000-6500 lbs capacity Electric Cushion Tire | | | | | | | |
| E3000 36V | 3,000 | 36 | 70.5 | 78 | 37 | 86 | 6,200 |
| E3000 48V | 3,000 | 48 | 70.5 | 78 | 37 | 86 | 6,200 |
| E3500 36V | 3,500 | 36 | 70.5 | 78 | 37 | 86 | 6,800 |
| E3500 48V | 3,500 | 48 | 70.5 | 78 | 37 | 86 | 6,800 |
| EC4000 36V | 4,000 | 36 | 72.5 | 81 | 39 | 86 | 7,400 |
| EC4000 48V | 4,000 | 48 | 72.5 | 81 | 39 | 86 | 7,400 |
| E4000 36V | 4,000 | 36 | 74.5 | 82 | 41.5 | 87 | 8,100 |
| E4000 48V | 4,000 | 48 | 74.5 | 82 | 41.5 | 87 | 8,100 |
| EC22N2 36V | 4,500 | 36 | 73.2 | 82 | 41.5 | 87 | 8,805 |
| EC22N2 48V | 4,500 | 48 | 73.2 | 82 | 41.5 | 87 | 8,805 |
| EC25N2 36V | 5,000 | 36 | 73.2 | 82 | 41.5 | 87 | 9,140 |
| EC25N2 48V | 5,000 | 48 | 73.2 | 82 | 41.5 | 87 | 9,140 |
| EC25EN2 36V | 5,000 | 36 | 77.3 | 85.9 | 41.5 | 87 | 9,350 |
| EC25EN2 48V | 5,000 | 48 | 77.3 | 85.9 | 41.5 | 87 | 9,350 |
| EC25LN2 36V | 5,500 | 36 | 77.3 | 85.9 | 43.5 | 87 | 9,680 |
| EC25LN2 48V | 5,500 | 48 | 77.3 | 85.9 | 43.5 | 87 | 9,680 |
| EC30N2 36V | 6,000 | 36 | 78.8 | 88.8 | 43.5 | 87 | 10,635 |
| EC30N2 48V | 6,000 | 48 | 78.8 | 88.8 | 43.5 | 87 | 10,635 |
| EC30LN2 36V | 6,500 | 36 | 79.5 | 88.8 | 43.5 | 87 | 11,090 |
| EC30LN2 48V | 6,500 | 48 | 79.5 | 88.8 | 43.5 | 87 | 11,090 |
| 5,000-6,000 lbs capacity Pneumatic Tire | | | | | | | |
| 2EPC5000 | 5,000 | 80 | 78.7 | 90.4 | 47.2 | 88.2 | 10,472 |
| 2EP5000 | 5,000 | 80 | 84.7 | 96.1 | 47.2 | 88.2 | 10,311 |
| 2EPC6000 | 6,000 | 80 | 78.7 | 90.6 | 47.2 | 88.2 | 11,530 |
| 2EP6000 | 6,000 | 80 | 84.7 | 96.3 | 47.2 | 88.2 | 11,303 |
| 2EP6500 | 6,000 | 80 | 84.7 | 96.5 | 51.2 | 88.2 | 11,876 |
| 8,000-10,000 lbs capacity Pneumatic Tire | | | | | | | |
| 2EPC8000 | 8,000 | 80 | 89.9 | 150.3 | 52.8 | 88.6 | 14,623 |
| 2EP8000 | 8,000 | 80 | 96.5 | 156 | 52.8 | 88.6 | 14,553 |
| 2EP8500 | 8,500 | 80 | 103.8 | 161.5 | 57.1 | 88 | 15,580 |
| 2EPC9000 | 9,000 | 80 | 89.9 | 150.3 | 57.1 | 88 | 15,637 |
| 2EP9000 | 9,000 | 80 | 96.5 | 144.1 | 57.1 | 88 | 15,547 |
| 2EP10000 | 10,000 | 80 | 96.5 | 156 | 57.1 | 88 | 16,402 |
| 2EP11000 | 11,000 | 80 | 103.8 | 161.5 | 57.1 | 88 | 17,476 |



2ET3500 ▲



EPC3500 ▲



EC25LN2 ▲



2EPC8000 ▲



Class IV Internal Combustion Cushion Tire (LP Gas)

| Model | Capacity (lbs) | Turning Radius (in) | Length (in) | Width (in) | Height (in) | Weight (lbs) |
|--|----------------|---------------------|-------------|------------|-------------|--------------|
| 3,000-4,000 lbs capacity Pneumatic Tire | | | | | | |
| 2C3000 | 3,000 | 70 | 82 | 38 | 81 | 6,065 |
| 2C3500 | 3,500 | 71 | 83 | 38 | 81 | 6,450 |
| 2CC4000 | 4,000 | 73 | 86 | 40 | 81 | 7,010 |
| 2C4000 | 4,000 | 77.5 | 90.5 | 42 | 81.5 | 7,360 |
| 2C5000 | 5,000 | 79.5 | 92.5 | 42 | 81.5 | 8,155 |
| 2C5500 | 5,500 | 81 | 95 | 42.4 | 81.5 | 9,050 |
| 2C6000 | 6,000 | 82.5 | 96.5 | 42.4 | 81.5 | 9,480 |
| 2C6500 | 6,500 | 83.5 | 97.5 | 42.4 | 81.5 | 9,840 |
| 7,000-15,000 lbs capacity LP Gas Cushion Tire | | | | | | |
| GC35K | 7,000 | 88 | 98.8 | 46.5 | 86.8 | 11,550 |
| GC40K | 8,000 | 90 | 100.4 | 46.5 | 86.8 | 12,280 |
| GC40KSTR | 8,000 | 82.3 | 94.9 | 46.5 | 86.8 | 12,470 |
| GC45KSWB | 10,000 | 92.1 | 103.1 | 46.5 | 86.8 | 14,265 |
| GC55K | 12,000 | 100.4 | 114.6 | 52 | 86.8 | 15,850 |
| GC55KSTR | 12,000 | 92.5 | 104.5 | 52 | 86.8 | 16,645 |
| GC60K | 13,500 | 101.2 | 116.1 | 56.7 | 88.8 | 19,310 |
| GC70K | 15,500 | 101.2 | 116.1 | 56.7 | 88.8 | 20,900 |
| GC70KSTR | 15,500 | 97.2 | 107.5 | 56.7 | 88.8 | 21,870 |



2C3000 ▲



GC35K ▲



GC70KPRH ▲

| Model | Capacity (lbs) | Max Fork Height (in) | Length (in) | Width (in) | Height (in) | Weight (lbs) |
|---|----------------|----------------------|-------------|------------|-------------|--------------|
| 8000-15,000 lbs capacity LP Gas Cushion Tire | | | | | | |
| GC40KPRHSTR | 8,000 | 198.8 | 94.9 | 46.5 | 86.8 | 12,470 |
| GC45KPRHSTR | 10,000 | 198.8 | 103.1 | 46.5 | 86.8 | 14,265 |
| GC55KPRSTR | 12,000 | 179.5 | 104.5 | 52 | 86.8 | 16,645 |
| GC70KPRH | 15,500 | 198.8 | 116.1 | 56.7 | 88.8 | 20,900 |
| GC70KPRHSTR | 15,500 | 198.8 | 107.5 | 56.7 | 88.8 | 21,870 |

Class V - Internal Combustion Pneumatic Tire (LP Gas)

| Model | Capacity (lbs) | Turning Radius (in) | Length (in) | Width (in) | Height (in) | Weight (lbs) |
|---|----------------|---------------------|-------------|------------|-------------|--------------|
| 3000-7000 lbs capacity Internal Combustion Pneumatic Tire | | | | | | |
| GP15N | 3,000 | 76.8 | 89 | 42 | 82.5 | 5,650 |
| GP18N | 3,500 | 78 | 90 | 42 | 82.5 | 6,070 |
| GP20CN | 4,000 | 79.5 | 92 | 42 | 83 | 6,750 |
| GP20N | 4,000 | 86.5 | 98 | 45.5 | 83 | 7,370 |
| DP20N | 4,000 | 86.5 | 98 | 45.5 | 83 | 7,610 |
| GP25N | 5,000 | 87.8 | 100 | 45.5 | 83 | 7,990 |
| DP25N | 5,000 | 87.8 | 100 | 45.5 | 83 | 8,210 |
| GP28N | 5,500 | 91.1 | 104 | 50 | 83 | 9,090 |
| DP28N | 5,500 | 91.1 | 104 | 50 | 84 | 9,330 |
| GP30N | 6,000 | 93.7 | 107 | 50 | 84 | 9,400 |
| DP30N | 6,000 | 93.7 | 107 | 50 | 84 | 9,640 |
| GP33N | 6,500 | 96 | 108 | 50 | 84 | 10,150 |
| DP33N | 6,500 | 96 | 108 | 50 | 84 | 10,390 |
| GP35N | 7,000 | 96 | 110 | 51 | 84.5 | 10,340 |
| DP35N | 7,000 | 96 | 110 | 51 | 84.5 | 10,590 |
| 8,000-12,000 lbs capacity Internal Combustion Pneumatic Tire | | | | | | |
| GP40N1 | 8,000 | 101 | 118 | 55.5 | 90.5 | 12,900 |
| DP40N1 | 8,000 | 101 | 118 | 55.5 | 90.5 | 13,050 |
| GP45N1 | 9,000 | 107 | 123 | 57.5 | 90.5 | 13,800 |
| DP45N1 | 9,000 | 107 | 123 | 57.5 | 90.5 | 13,950 |
| GP50CN1 | 10,000 | 109 | 125 | 57.5 | 90.5 | 14,950 |
| DP50CN1 | 10,000 | 109 | 125 | 57.5 | 90.5 | 15,100 |
| GP50N1 | 11,000 | 114 | 132.5 | 57.5 | 90.5 | 15,950 |
| DP50N1 | 11,000 | 114 | 132.5 | 57.5 | 90.5 | 16,100 |
| GP55N1 | 12,000 | 116 | 132 | 57.5 | 90.5 | 16,700 |
| DP55N1 | 12,000 | 116 | 132 | 57.5 | 90.5 | 16,843 |
| 15000 lbs capacity Diesel Pneumatic Tire | | | | | | |
| DP70E | 15,500 | 133.7 | 143.3 | 85.6 | 95.3 | 20,705 |
| 15000 lbs capacity Diesel Pneumatic Tire | | | | | | |
| DP100N | 22,000 | 157.5 | 168.9 | 99 | 114.8 | 34,613 |
| DP120N | 26,500 | 159.8 | 172.2 | 99 | 114.8 | 37,412 |
| DP135N | 30,000 | 163.8 | 178.1 | 102.4 | 116.5 | 41,293 |
| DP150N | 33,000 | 179.1 | 190.2 | 102.4 | 116.5 | 40,411 |
| DP160N | 36,000 | 189.6 | 198.6 | 103.7 | 116.5 | 42,395 |



GP15N ▲



GP40N ▲



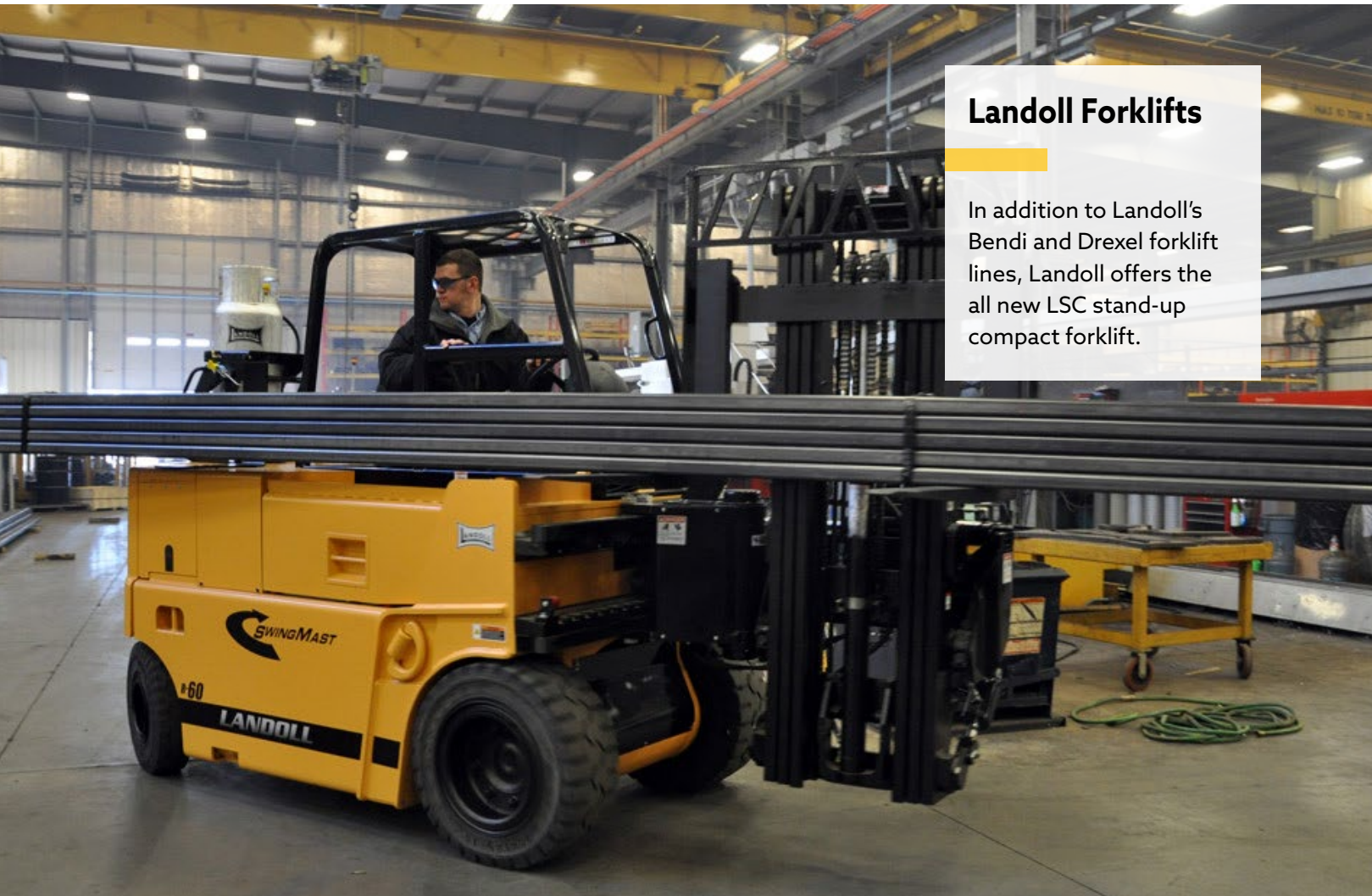
DP100N ▲

Hand Pallet Truck

| Model | Width (in) | Fork Length (in) | Lowered Height (in) | Raised Height (in) | Capacity (lbs) |
|------------|------------|------------------|---------------------|--------------------|----------------|
| A400002750 | 27 | 48 | 2.03 | 5.5 | 3,300 |
| A400002748 | 27 | 48 | 2.92 | 7.67 | 5,500 |
| A400002048 | 20.5 | 48 | 2.92 | 7.67 | 5,500 |
| A400002036 | 20.5 | 35.5 | 2.92 | 7.67 | 5,500 |
| A400002043 | 20.5 | 43.3 | 2.92 | 7.67 | 5,500 |



A400002748 ▲



Landoll Forklifts

In addition to Landoll's Bendi and Drexel forklift lines, Landoll offers the all new LSC stand-up compact forklift.

Compact Electric Lift Truck

| Model | LSC25 | | LSC30 | |
|------------------------------------|----------|-------------|-------------|--------|
| Capacity at 24 (600mm) Load Center | lb/kg | 2,500/1,136 | 3,000/1,364 | |
| Truck Weight with Battery | lbs/kg | 6,750/3,068 | 6,600/3,000 | |
| Travel Speed | Loaded | mph/kph | 6/9.7 | 6/9.7 |
| | Unloaded | mph/kph | 7/11.3 | 7/11.3 |
| Wheelbase - Mast Vertical | in/cm | 34.6/88 | 40.6/103 | |
| Fork Length | in/cm | 42/107 | 42/107 | |
| Operator Floor Height | in/cm | 10.5/27 | 10.5/27 | |
| Gradeability Loaded/Unloaded | % | 7/12 | 7/12 | |



Bendi Electric Lift Trucks

| Model | Basic Capacity (lbs/kg) | Maximum Triple Mast Lift Height Available (in/M) | Maximum Quad Mast Lift Height Available (in/M) | Recommended Storage Aisle Size with 48 x 40 load (in/M) |
|-----------|-------------------------|--|--|---|
| B3/30 AC | 3,000/1,363 | 360/9.14 | NA | 72/1800 |
| B30AC | 3,000/1,363 | 276/7.01 | 312/7.92 | 78/1981 |
| B40AC | 4,000/1,818 | 360/9.14 | 312/7.92 | 78/1981 |
| B40VAC | 4,000/1,818 | 360/9.14 | 312/7.92 | 72/1870 |
| B55 AC | 5,500/2,500 | 360/9.14 | 315/8 | 84/2.13 |
| B55 AC HL | 5,500/2,500 | 472/12 | NA | 84/2.13 |

Bendi i4 - LP Gas Powered

| Model | Basic Capacity (lbs/kg) | Maximum Triple Mast Lift Height Available (in/M) | Maximum Quad Mast Lift Height Available (in/M) | Recommended Storage Aisle Size with 48 x 40 load (in/M) |
|-------|-------------------------|--|--|---|
| B40i5 | 4,000/1,818 | 312/7.92 | 312/7.92 | 78/1981 |

Drexel Swing Mast

| Model | Basic Capacity (lbs/kg) | Power Source | Maximum Triple Mast Lift Height Available (in/M) | Maximum Quad Mast Lift Height Available (in/M) | Recommended Storage Aisle Size with 48 x 40 load (in/M) |
|------------------------------------|-------------------------|------------------|--|--|---|
| SLT-30AC | 3,000/1,363 | Electric | 272/6.90 | 312/7.92 | 56/1420 |
| SLT-35AC | 3,500/1,590 | Electric | 272/6.90 | 312/7.92 | 56/1420 |
| SL-30 | 3,000/1,367 | Electric | 272/6.91 | 312/7.92 | 60/1500 |
| SL-40 | 4,000/1,818 | Electric | 360/9.14 | 312/7.92 | 60/1500 |
| SL-50 | 5,000/2,272 | Electric | 374/9.5 | 315/8.00 | 60/1500 |
| SL-60 | 6,000/2,727 | Electric | 289/7.34 | NA | 66/1676 |
| SL-80 | 8,000/3,636 | Electric | 281/7.14 | NA | 72/1829 |
| SL-120 | 12,000/5,455 | Electric | 243/6.17 | NA | 78/1981 |
| E-60-SL | 6,000/2,727 | LP Gas or Diesel | 240/6.10 | NA | 72/1829 |
| Drexel EX (Explosion Proof) | | | | | |
| FL-40-EX | 4,000/1,818 | Electric | 236/5.99 | | 144/3658 |
| FL-60-EX | 6,000/2,727 | Electric | 234/5.94 | | 144/3658 |



ELECTRIC COUNTERBALANCED TRUCKS

2,000-3,000 lbs Capacity Three-Wheeled Electric Trucks

| Model | Basic Capacity (lbs) | Max Fork Height (in) | Voltage (Volts) | Length to Fork Face | Chassis (in) | Chassis Height (in) | Gross Weight (lbs) |
|----------|----------------------|----------------------|-----------------|---------------------|--------------|---------------------|--------------------|
| EFG 110 | 1,920 | 255 | 24 | 61.8 | 39 | 110 | 5,490 |
| EFG 110k | 1,920 | 255 | 24 | 63.9 | 39 | 110 | 5,666 |
| EFG 113 | 2,400 | 255 | 24 | 68.1 | 39 | 255 | 6,085 |
| EFG 115 | 2,880 | 255 | 24 | 70.3 | 39 | 110 | 6,327 |



EFG110

2,500-4,000 lbs Capacity Three-Wheeled Electric Trucks

| Model | Basic Capacity (lbs) | Max Fork Height (in) | Voltage (Volts) | Length to Fork Face | Chassis (in) | Chassis Height (in) | Gross Weight (lbs) |
|----------|----------------------|----------------------|-----------------|---------------------|--------------|---------------------|--------------------|
| EFG 213 | 2,510 | 256 | 48 | 69.8 | 41.7 | 79 | 5,947 |
| EFG 216k | 3,100 | 255 | 48 | 74.3 | 41.7 | 79 | 6,520 |
| EFG 216 | 3,100 | 255 | 48 | 78.5 | 41.7 | 79 | 6,627 |
| EFG 218k | 3,490 | 256 | 48 | 74.3 | 44.1 | 79 | 7,084 |
| EFG 218 | 3,490 | 256 | 48 | 78.5 | 44.1 | 79 | 6,957 |
| EFG 220 | 3,880 | 256 | 48 | 78.5 | 44.1 | 79 | 7,343 |



EFG213

4 WHEEL ELECTRIC PNEUMATIC COUNTERBALANCED

3,000 - 4,000 lbs Capacity Electric 4 Wheel Pneumatic Tire Lift

| Model | Basic Capacity (lbs) | Max Fork Height (in) | Voltage (Volts) | Length to Fork Face | Chassis (in) | Chassis Height (in) | Gross Weight (lbs) |
|----------|----------------------|----------------------|-----------------|---------------------|--------------|---------------------|--------------------|
| EFG 316k | 3,100 | 256 | 48 | 78.3 | 41.7 | 79 | 6,597 |
| EFG 316 | 3,100 | 256 | 48 | 82.6 | 41.7 | 79 | 6,503 |
| EFG 318k | 3,490 | 256 | 48 | 78.3 | 44.1 | 79 | 6,906 |
| EFG 318 | 3,490 | 256 | 48 | 82.6 | 44.1 | 79 | 6,812 |
| EFG 320 | 3,880 | 256 | 48 | 82.6 | 44.1 | 79 | 7,175 |



EFG316

5,000 - 6,500 lbs Capacity Electric 4 Wheel Pneumatic Tire Lift

| Model | Basic Capacity (lbs) | Max Fork Height (in) | Voltage (Volts) | Length to Fork Face | Chassis (in) | Chassis Height (in) | Gross Weight (lbs) |
|----------|----------------------|----------------------|-----------------|---------------------|--------------|---------------------|--------------------|
| EFG 425k | 4,928 | 275 | 80 | 90.4 | 47.2 | 88.2 | 10,472 |
| EFG 425 | 4,928 | 275 | 80 | 96.1 | 47.2 | 88.2 | 10,311 |
| EFG 430k | 5,917 | 275 | 80 | 90.6 | 47.2 | 88.2 | 11,530 |
| EFG 430 | 5,917 | 275 | 80 | 96.3 | 47.2 | 88.2 | 11,303 |
| EFG S30 | 6,608 | 275 | 80 | 96.5 | 51.2 | 88.2 | 11,876 |



EFG425K

Jungheinrich Forklifts

Regardless of the lift height, surface or transport distance, Jungheinrich has the solution with a full range of industrial trucks for all the applications.

7,000 - 11,000 lbs Capacity Electric 4 Wheel Pneumatic Tire Lift

| Model | Basic Capacity (lbs) | Max Fork Height (in) | Voltage (Volts) | Length to Fork Face | Chasis (in) | Chasis Height (in) | Gross Weight (lbs) |
|----------|----------------------|----------------------|-----------------|---------------------|-------------|--------------------|--------------------|
| EFG 535k | 7,000 | 295 | 80 | 105.4 | 52.8 | 90.6 | 12,645 |
| EFG 540k | 8,000 | 295 | 80 | 105 | 52.8 | 88.6 | 12,645 |
| EFG 540 | 8,000 | 295 | 80 | 110.7 | 52.8 | 88.6 | 14,533 |
| EFG 540 | 8,500 | 295 | 80 | 116.2 | 40.9 | 88.0 | 15,580 |
| EFG 545k | 9,000 | 295 | 80 | 105 | 40.9 | 88.0 | 15,547 |
| EFG 545 | 9,000 | 295 | 80 | 110.7 | 40.9 | 88.0 | 15,637 |
| EFG 550 | 10,000 | 295 | 80 | 110.7 | 40.9 | 88.0 | 16,402 |
| EFG 550 | 11,000 | 295 | 80 | 116.2 | 40.9 | 88.0 | 17,476 |



EFG110 ▲

STAND-UP END CONTROL

3,000 - 5,500 lbs Capacity Electric Stand-Up Control Forklifts

| Model | Basic Capacity (lbs) | Max Fork Height (in) | Voltage (Volts) | Length to Fork Face | Chasis (in) | Chasis Height (in) | Gross Weight (lbs) |
|---------|----------------------|----------------------|-----------------|---------------------|-------------|--------------------|--------------------|
| ETG 230 | 3,000 | 276 | 36 | 67.5 | 41 | 88 | 7,700 |
| ETG 235 | 3,500 | 276 | 36 | 67.5 | 41 | 88 | 8,400 |
| ETG 340 | 4,000 | 276 | 36 | 73 | 41 | 88 | 9,250 |
| ETG 350 | 5,000 | 276 | 36 | 76.2 | 41 | 88 | 10,740 |
| ETG 350 | 5,500 | 276 | 36 | 77.4 | 41 | 88 | 11,350 |



ETG230 ▲

MOVING MAST ELECTRIC SIT-DOWN REACH TRUCKS

2,200 - 2,600 lbs Capacity Electric Sit-Down Moving Mast High Reach Trucks

| Model | Basic Capacity (lbs) | Max Fork Height (in) | Voltage (Volts) | Length to Fork Face | Chasis (in) | Chasis Height (in) | Gross Weight (lbs) |
|---------|----------------------|----------------------|-----------------|---------------------|-------------|--------------------|--------------------|
| ETV 110 | 2,205 | 279 | 48 | 91.4 | 17.4 | 279 | 5,644 |
| ETV 112 | 2,646 | 279 | 48 | 91.4 | 17.4 | 279 | 5,688 |



ETV110 ▲

3,000-3,500 lbs Capacity Electric Sit-Down Moving Mast High Reach Trucks

| Model | Basic Capacity (lbs) | Max Fork Height (in) | Voltage (Volts) | Length to Fork Face | Chasis (in) | Chasis Height (in) | Gross Weight (lbs) |
|---------|----------------------|----------------------|-----------------|---------------------|-------------|--------------------|--------------------|
| ETM 214 | 355 | 355 | 48 | 95.2 | 44.1 | 421 | 6,545 |
| ETV 214 | 421 | 421 | 48 | 92.4 | 50 | 421 | 6,600 |
| ETM 216 | 355 | 355 | 48 | 95.2 | 44.1 | 421 | 6,842 |
| ETV 216 | 421 | 421 | 48 | 95.2 | 50 | 421 | 6,899 |



ETV318 ▲

3,900-5,500 lbs Capacity Electric Sit-Down Moving Mast High Reach Trucks

| Model | Basic Capacity (lbs) | Max Fork Height (in) | Voltage (Volts) | Length to Fork Face | Chasis (in) | Chasis Height (in) | Gross Weight (lbs) |
|---------|----------------------|----------------------|-----------------|---------------------|-------------|--------------------|--------------------|
| ETV 318 | 3,900 | 511 | 48 | 95.2 | 50 | 511 | 7,765 |
| ETV 320 | 4,400 | 511 | 48 | 96.8 | 50.8 | 511 | 8,047 |
| ETM 325 | 5,500 | 358 | 48 | 100.3 | 47.2 | 511 | 8,587 |
| ETV 325 | 5,500 | 511 | 48 | 100.3 | 53.1 | 511 | 8,157 |

3,500-4,400 lbs Capacity Multi-Purpose Moving Mast High Reach Trucks

| Model | Basic Capacity (lbs) | Max Fork Height (in) | Voltage (Volts) | Length to Fork Face | Chasis (in) | Chasis Height (in) | Gross Weight (lbs) |
|---------|----------------------|----------------------|-----------------|---------------------|-------------|--------------------|--------------------|
| ETV C16 | 3,500 | 304.9 | 48 | 51.9 | 50 | 91 | 7,926 |
| ETV C20 | 4,400 | 320.7 | 48 | 53.5 | 50 | 94.5 | 8,741 |



ETV C16 ▲

4,400-5,500 lbs Capacity Multi-Purpose Moving Mast High Reach Trucks

| Model | Basic Capacity (lbs) | Max Fork Height (in) | Voltage (Volts) | Length to Fork Face | Chasis (in) | Chasis Height (in) | Gross Weight (lbs) |
|---------|----------------------|----------------------|-----------------|---------------------|-------------|--------------------|--------------------|
| ETV Q20 | 4,400 | 421 | 48 | 50.5 | 50 | 166 | 8,950 |
| ETV Q25 | 5,500 | 421 | 48 | 50 | 53.9 | 166 | 9,150 |

3,000-4,500 lbs Capacity 36 Volt Electric Reach Truck Forklift

| Model | Basic Capacity (lbs) | Max Fork Height (in) | Voltage (Volts) | Length to Fork Face | Chasis (in) | Chasis Height (in) | Gross Weight (lbs) |
|----------|----------------------|----------------------|-----------------|---------------------|-------------|--------------------|--------------------|
| ETR 230 | 3,000 | 302 | 36 | 74.1 | 41.5 | 270 | 8,850 |
| ETR 235 | 3,500 | 302 | 36 | 76.1 | 41.5 | 270 | 8,850 |
| ETR 340 | 4,000 | 366 | 36 | 76.1 | 41.5 | 450 | 9,050 |
| ETR 345 | 4,500 | 450 | 36 | 76.1 | 41.5 | 450 | 9,050 |
| ETR 335d | 3,500 | 450 | 36 | 78.1 | 41.5 | 450 | 9,400 |



ETR230 ▲

TURRET TRUCKS

2,200-2,750 lbs Capacity Electric Man-Down Turret Trucks

| Model | Basic Capacity (lbs) | Max Fork Height (in) | Voltage (Volts) | Length to Fork Face | Chasis (in) | Chasis Height (in) | Gross Weight (lbs) |
|---------|----------------------|----------------------|-----------------|---------------------|-------------|--------------------|--------------------|
| EFX 410 | 2,200 | 302 | 48 | 116.4 | 61 | 110.4 | 11,200 |
| EFX 413 | 2,750 | 302 | 48 | 116.4 | 61 | 110.4 | 11,817 |



EFX410 ▲

2,200 lbs Capacity Electric High-Rack Turret and Order Picker

| Model | Basic Capacity (lbs) | Max Fork Height (in) | Voltage (Volts) | Length to Fork Face | Chasis (in) | Chasis Height (in) | Gross Weight (lbs) |
|---------|----------------------|----------------------|-----------------|---------------------|-------------|--------------------|--------------------|
| EKX 410 | 2,200 | 396 | 48 | 129.4 | 61.1 | 142 | 12,518 |

3,000-3,500 lbs Capacity Electric Swing Reach Forklift Trucks

| Model | Basic Capacity (lbs) | Max Fork Height (in) | Voltage (Volts) | Length to Fork Face | Chasis (in) | Chasis Height (in) | Gross Weight (lbs) |
|----------|----------------------|----------------------|-----------------|---------------------|-------------|--------------------|--------------------|
| EKX 514 | 3,000 | 374 | 80 | 133 | 57.1 | 116.3 | 14,440 |
| EKX 516k | 3,500 | 413 | 80 | 137.4 | 57.1 | 116.3 | 15,146 |
| EKX 516k | 3,500 | 570 | 80 | 148 | 57.1 | 116.3 | 17,637 |

2,200 lbs Capacity Electric Low-Level Order Pickers

| Model | Basic Capacity (lbs) | Max Fork Height (in) | Voltage (Volts) | Length to Fork Face | Chasis (in) | Chasis Height (in) | Gross Weight (lbs) |
|-----------------|----------------------|----------------------|-----------------|---------------------|-------------|--------------------|--------------------|
| EKS 110 (110E) | 2,200 | 127.1 | 24 | 66.5 | 31.9 | 65 | 3,607 |
| EKS 110 (160E) | 2,200 | 150.8 | 24 | 66.5 | 31.9 | 89 | 3,880 |
| EKS 110 (190E) | 2,200 | 162.6 | 24 | 66.5 | 31.9 | 100.8 | 3,942 |
| EKS 110 (280ZZ) | 2,200 | 198 | 24 | 66.5 | 31.9 | 89 | 4,945 |



EFX410 ▲

2,200-3,000 lbs Capacity Electric Mid-To High Level Order Pickers

| Model | Basic Capacity (lbs) | Max Fork Height (in) | Voltage (Volts) | Length to Fork Face | Chasis (in) | Chasis Height (in) | Gross Weight (lbs) |
|-----------------|----------------------|----------------------|-----------------|---------------------|-------------|--------------------|--------------------|
| EKS 208-48 Volt | 2,200 | 236 | 48 | 74.5 | 35.5 | 92 | 6,500 |
| EKS 308-36 Volt | 3,000 | 374 | 48 | 82 | 39.5 | 132 | 8,300 |
| EKS 308-48 Volt | 3,000 | 374 | 48 | 82 | 39.5 | 132 | 8,300 |

3,000 Capacity Electric High-Level Order Picker

| Model | Basic Capacity (lbs) | Max Fork Height (in) | Voltage (Volts) | Length to Fork Face | Chasis (in) | Chasis Height (in) | Gross Weight (lbs) |
|---------|----------------------|----------------------|-----------------|---------------------|-------------|--------------------|--------------------|
| EKS 314 | 3,000 | 366 | 24/36 | 78 | 42 | 92 | 8,710 |

PALLET TRUCKS AND TOW TRACTORS

4,400 lbs Capacity Electric Sit-On-Low Lift Pallet Trucks

| Model | Basic Capacity (lbs) | Max Fork Height (in) | Voltage (Volts) | Length to Fork Face | Chasis (in) | Chasis Height (in) | Gross Weight (lbs) |
|---------|----------------------|----------------------|-----------------|---------------------|-------------|--------------------|--------------------|
| ESE 220 | 4,400 | 84 | 24 | 33.7 | 32.3 | 90 | 2,380 |
| ESE 320 | 4,400 | 84 | 24 | 33.9 | 36.7 | 90 | 2,380 |

4,500-6,000 lbs Capacity Electric Walkie Pallet Jacks

| Model | Basic Capacity (lbs) | Max Fork Height (in) | Voltage (Volts) | Length to Fork Face | Chasis (in) | Chasis Height (in) | Gross Weight (lbs) |
|------------------------------|----------------------|----------------------|-----------------|---------------------|-------------|--------------------|--------------------|
| EJE 120 (short compartment) | 4,500 | 8.1 | 24 | 64.8 | 28.3 | 8.1 | 913 |
| EJE 120 (medium Compartment) | 4,500 | 8.1 | 24 | 68.3 | 28.3 | 8.1 | 913 |
| EJE 120 (large compartment) | 4,500 | 8.1 | 24 | 68.3 | 32.9 | 8.1 | 1,061 |
| EJE 225 | 6,000 | 8.1 | 24 | 28.5 | 28.5 | 8.2 | 1,095 |
| EJE 225E | 6,000 | 8.1 | 24 | 33.4 | 33.4 | 8.2 | 2,091 |

3,900-5,500 lbs Capacity Electric Sit-Down Moving Mast High Reach Trucks

| Model | Basic Capacity (lbs) | Max Fork Height (in) | Voltage (Volts) | Length to Fork Face | Chasis (in) | Chasis Height (in) | Gross Weight (lbs) |
|---------|----------------------|----------------------|-----------------|---------------------|-------------|--------------------|--------------------|
| ECR 327 | 6,000 | 8.7 | 24 | 90 | 35.8 | 8.7 | 2,730 |
| ECR 336 | 8,000 | 8.7 | 24 | 138 | 35.8 | 8.7 | 3,030 |

3,500-4,400 lbs Capacity Multi-Purpose Moving Mast High Reach Trucks

| Model | Basic Capacity (lbs) | Max Fork Height (in) | Voltage (Volts) | Length to Fork Face | Chasis (in) | Chasis Height (in) | Gross Weight (lbs) |
|---------------|----------------------|----------------------|-----------------|---------------------|-------------|--------------------|--------------------|
| ECE 227 XL NA | 6,000 | N/A | 24 | 54.7 | 32.7 | 32.7 | Ask |
| ECE 236 XL NA | 8,000 | N/A | 24 | 54.7 | 32.7 | 32.7 | Ask |

4,400-5,500 lbs Capacity Multi-Purpose Moving Mast High Reach Trucks

| Model | Basic Capacity (lbs) | Max Fork Height (in) | Voltage (Volts) | Length to Fork Face | Chasis (in) | Chasis Height (in) | Gross Weight (lbs) |
|-----------|----------------------|----------------------|-----------------|---------------------|-------------|--------------------|--------------------|
| EZS 350NA | 11,000 | N/A | 24 | 59.8 | 31.9 | N/A | 2,398 |
| EZS C40NA | 8,800 | N/A | 24 | 65.3 | 31.9 | N/A | 2,398 |



EKS314 ▲



ESE320 ▲



ECR327 ▲



ECR327 ▲

3,000-4,500 lbs Capacity 36 Volt Electric Reach Truck Forklift

| Model | Basic Capacity (lbs) | Max Fork Height (in) | Voltage (Volts) | Length to Fork Face | Chasis (in) | Chasis Height (in) | Gross Weight (lbs) |
|-----------|----------------------|----------------------|-----------------|---------------------|-------------|--------------------|--------------------|
| EZS 570NA | 15,400 | N/A | 48 | 71.5 | 39.5 | N/A | 2,635 |
| EZS 580NA | 17,600 | N/A | 48 | 71.4 | 39.2 | N/A | 2,847 |
| EZS 590NA | 19,800 | N/A | 48 | 71.4 | 39.2 | N/A | 3,045 |



EKS314 ▲

WALKIE STACKERS

2,600-4,400 lbs Capacity Electric Walkie Straddle and Fork-Over Stackers

| Model | Basic Capacity (lbs) | Max Fork Height (in) | Voltage (Volts) | Length to Fork Face | Chasis (in) | Chasis Height (in) | Gross Weight (lbs) |
|---------|----------------------|----------------------|-----------------|---------------------|-------------|--------------------|--------------------|
| EJC B12 | 2,600 | 114 | 24 | 31.7 | 31.5 | 77 | 2,350 |
| EJC B14 | 3,000 | 117 | 24 | 35.8 | 31.5 | 77 | 2,527 |
| EJC B16 | 3,500 | 113 | 24 | 35.8 | 31.5 | 77 | 2,527 |
| EJC B20 | 4,400 | 110.2 | 24 | 35.8 | 31.5 | 82.7 | 2,280 |
| EJC 214 | 3,000 | 117 | 24 | 29.9 | 31.5 | 77 | 2,390 |
| EJC 216 | 3,500 | 113 | 24 | 29.9 | 31.5 | 77 | 2,400 |
| EJC 220 | 4,400 | 113 | 24 | 32.3 | 32.3 | 82.7 | 2,400 |



EJC B14 ▲

2,200 lbs Capacity Electric Walkie Stacker

| Model | Basic Capacity (lbs) | Max Fork Height (in) | Voltage (Volts) | Length to Fork Face | Chasis (in) | Chasis Height (in) | Gross Weight (lbs) |
|---------|----------------------|----------------------|-----------------|---------------------|-------------|--------------------|--------------------|
| EMC 110 | 2,200 | 60.6 | 2 x 12 | 21.1 | 31.5 | 77.6 | 1,207 |
| EMC 110 | 2,200 | 78.7 | 2 x 12 | 21.1 | 31.5 | 95.7 | 1,287 |

2,600-3,500 lbs Capacity Electric Counterbalanced Walkie Stackers

| Model | Basic Capacity (lbs) | Max Fork Height (in) | Voltage (Volts) | Length to Fork Face | Chasis (in) | Chasis Height (in) | Gross Weight (lbs) |
|---------|----------------------|----------------------|-----------------|---------------------|-------------|--------------------|--------------------|
| EJG 212 | 2,600 | 24 | 24 | 58.3 | 35.4 | 85.2 | 4,341 |
| EJG 214 | 3,000 | 24 | 24 | 63 | 35.4 | 85.2 | 4,363 |
| EJG 216 | 3,500 | 24 | 24 | 67.7 | 35.4 | 85.2 | 4,385 |



EJC B14 ▲

3,000-3,500 lbs Capacity Electric Fork Over Stand-On Stackers

| Model | Basic Capacity (lbs) | Max Fork Height (in) | Voltage (Volts) | Length to Fork Face | Chasis (in) | Chasis Height (in) | Gross Weight (lbs) |
|---------|----------------------|----------------------|-----------------|---------------------|-------------|--------------------|--------------------|
| ERC 214 | 3,000 | N/A | 24 | 36.1 | 22.4 | N/A | 2,689 |
| ERC 216 | 3,500 | N/A | 24 | 36.1 | 22.4 | N/A | 2,712 |



ERC214 ▲

HAND PALLET TRUCK

4,580 lbs Capacity Hand Pallet Truck

| Model | Basic Capacity (lbs) | Dimensions (in) |
|------------|----------------------|-----------------|
| AM22002478 | 4,850 | 27" x 48" |



AM22002478 ▲



19-150' Lift Height

Since 1969, JLG® Industries, Inc. has been providing access equipment for a wide variety of industries and applications. For agriculture, heavy construction, warehousing, or virtually anything in between, Kelly Tractor offers the full JLG line of aerial work platforms, mast booms and equipment accessories to meet your needs.

JLG electric powered aerial work platforms feature longer runtime, greater uptime and higher productivity. Whether you're looking for electric scissor lifts with longer runtime or engine-powered scissors for rough terrain, we've got the models you need with the capacity and height for the job.

SCISSOR LIFTS

| Model | Platform Height (ft-in) | Machine Width (ft-in) | Platform Capacity (lbs) Extension/Unrestricted | Batteries |
|-------------------------------------|-------------------------|-----------------------|--|--------------------|
| Electric Scissor Lifts | | | | |
| 1930ES | 18ft 9in | 2ft 6in | 250/500 lbs | 4x6V, 220 amp-hour |
| 2032ES | 20ft | 2ft 8in | 250/500 lbs | 4x6V, 220 amp-hour |
| 2632ES | 25ft 6in | 2ft 8in | 250/500 lbs | 4x6V, 220 amp-hour |
| 2646ES | 26ft | 3ft 10in | 250/1,000 lbs | 4x6V, 220 amp-hour |
| 3246ES | 31ft 9in | 3ft 10in | 250/700 lbs | 4x6V, 220 amp-hour |
| Engine Powered Scissor Lifts | | | | |
| 260MRT | 26ft | 5ft 9in | 300 lbs | Kubota 24.5 |
| 330LRT | 33ft | 7ft 9in | 2,250 lbs | Kubota 24.8 |
| 430LRT | 43ft | 7ft 9in | 1,500 lbs | Kubota 24.8 |
| 530LRT | 53ft | 7ft 7in | 1,500 lbs | Kubota 31 |



430LRT ▲

BOOMS

Electric Boom Lifts

| Model | Platform Height (ft-in) | Machine Width (ft-in) | Platform Capacity (lbs) | Batteries |
|---------------|-------------------------|-----------------------|-------------------------|---------------------|
| E300AJP | 29ft 5in | 4ft | 500 | 8x6V, 305 amp-hour |
| E300AJ | 30ft 2in | 4ft | 500 | 8x6V, 305 amp-hour |
| E400AJP | 40ft | 5ft 9in | 500 | 8x6V, 305 amp-hour |
| E400AJPN | 40ft | 4ft 11in | 500 | 8x6V, 370 amp-hour |
| E400AN | 40ft | 4ft 11in | 500 | 8x6V, 370 amp-hour |
| E450A | 45ft | 5ft 9in | 500 | 8x6V, 370 amp-hour |
| E450AJ | 45ft | 5ft 9in | 500 | 8x6V, 370 amp-hour |
| H340AJ Hybrid | 33ft 9in | 6ft 4in | 500 | 8x12V, 100 amp-hour |
| H800AJ | 51ft 10in | 8ft | 500 | 12V, 205 AH |
| M400AJP | 40ft | 5ft 9in | 500 | 8x6V, 370 amp-hour |
| M400AJPN | 40ft | 4ft 11in | 500 | 8x6V, 370 amp-hour |
| M450AJ | 45ft | 5ft 9in | 500 | 8x6V, 370 amp-hour |



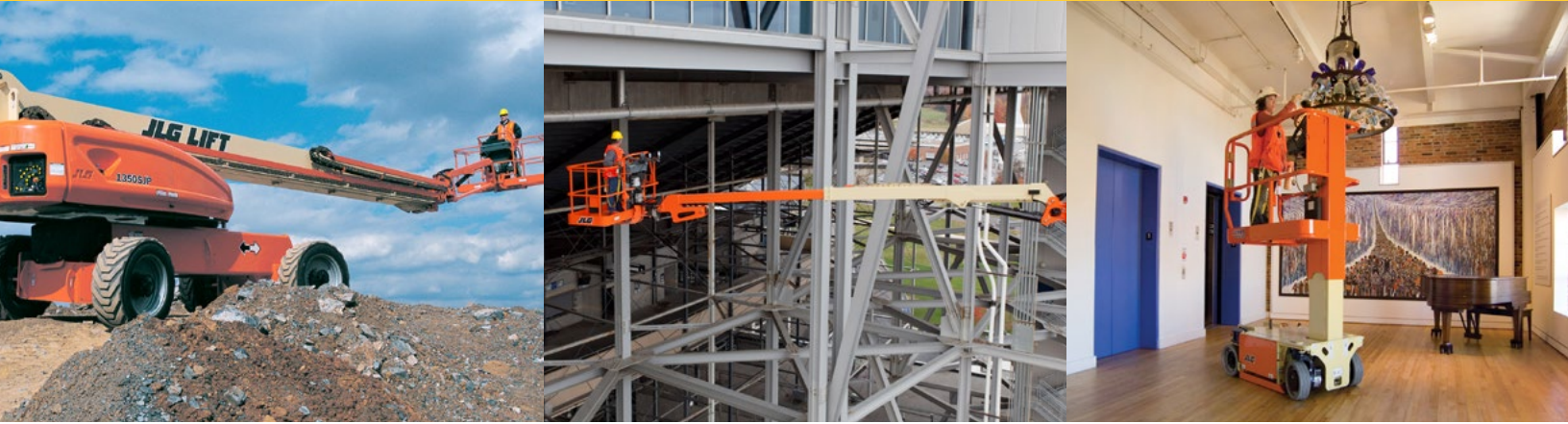
E400AJPN ▲

Engine Powered Boom Lifts - Articulating

| Model | Platform Height (ft-in) | Machine Width (ft-in) | Platform Capacity (lbs) | Engine |
|---------------|-------------------------|-----------------------|-------------------------|----------------------|
| 340AJ | 30ft 10in | 6ft 4in | 500 | Kubota/24.8 hp |
| 450AJ | 45ft | 7ft 9in | 550 | Deutz Tier 4/49 hp |
| 600A | 60ft 5in | 7ft | 500 | Deutz Tier 4/67 hp |
| 600AN Narrow | 60ft 5in | 7ft | 500 | Deutz Tier 4/67 hp |
| 600AJ | 60ft 7in | 8ft 2in | 500 | Deutz Tier 4/67 hp |
| 600AJN Narrow | 39ft 9in | 7ft | 500 | Deutz Tier 4/67 hp |
| 740AJ | 74ft | 8ft 2in | 500 | Deutz Tier 4/67 hp |
| 800A | 80ft | 8ft 2in | 500 | Deutz Tier 4/67 hp |
| 800AJ | 80ft | 8ft 2in | 500 | Deutz Tier 4/67 hp |
| 1250AJP | 125ft | 8ft 2in | 500 | Deutz Tier 4/72 hp |
| 1500AJP | 150ft | 8ft 2in | 1,000 | Deutz Tier 4/99.8 hp |



740AJ ▲



BOOMS

Powered Boom Lifts - Telescoping

| Model | Platform Height (ft-in) | Machine Width (ft-in) | Platform Capacity (lbs) | Engine |
|---------|-------------------------|-----------------------|-------------------------|----------------------|
| 400S | 40ft | 7ft 7in | 1,000 | Deutz Tier 4/49 hp |
| 460SJ | 46ft | 7ft 7in | 600 | Deutz Tier 4/49 hp |
| 600SC | 60ft 3in | 8ft 2in | 1,000 | Deutz Tier 4/67 hp |
| 660SJC | 66ft 8in | 8ft 2in | 500 | Deutz Tier 4/67 hp |
| 800S | 80ft | 8ft 2in | 1,000 | Deutz Tier 4/67 hp |
| 860SJ | 86ft | 8ft 2in | 750 | Deutz Tier 4/67 hp |
| 1200SJP | 120ft | 8ft 2in | 1,000 | Deutz Tier 4/74.2 hp |
| 1350SJP | 135ft | 8ft 2in | 1,000 | Deutz Tier 4/74.2 hp |
| 1500SJ | 150ft | 8ft 2in | 1,000 | Deutz Tier 4/74.2 hp |
| 1850SJ | 185ft | 8ft 2in | 1,000 | Deutz Tier 4/99.8 hp |



660SJC ▲



Vertical Mast Lift - Push Arouds

| Model | Platform Height (ft-in) | Machine Width (ft-in) | Platform Capacity (lbs) |
|-------|-------------------------|-----------------------|-------------------------|
| 19AMI | 19ft 4in | 2ft 10in | 350 |
| 20AM | 20ft 5in | 2ft 5in | 350 |
| 25AM | 25ft 2in | 2ft 5in | 350 |
| 30AM | 29ft 10in | 2ft 5in | 350 |
| 36AM | 36ft 3in | 2ft 5in | 300 |
| 41AM | 40ft 9in | 2ft 5in | 300 |

Vertical Mast Lift - Driveable

| Model | Platform Height (ft-in) | Machine Width (ft-in) | Platform Capacity (lbs) | Drive System |
|--------|-------------------------|-----------------------|-------------------------|--------------------|
| 1230ES | 12ft | 2ft 6in | 500 | 24V Electric, 8 hp |
| 15MVL | 15ft 4in | 2ft 6in | 500 | 4 Brush Electric |
| 20MVL | 19ft 1in | 2ft 6in | 500 | 4 Brush Electric |

Mobile Stock Picker - Push Around

| Model | Platform Height (ft-in) | Machine Width (ft-in) | Platform Capacity (lbs) |
|-------|-------------------------|-----------------------|-------------------------|
| 12SP | 11ft 9in | 2ft 10in | 500 |
| 15SP | 15ft 2in | 2ft 10in | 500 |

Mobile Stock Picker - Driveable

| Model | Platform Height (ft-in) | Machine Width (ft-in) | Platform Capacity (lbs) | Drive System |
|-------|-------------------------|-----------------------|-------------------------|------------------|
| 10MP | 10ft | 2ft 6in | 350 | 4 Brush Electric |
| 15MSP | 15ft 3in | 2ft 6in | 500 | 4 Brush Electric |
| 20MSP | 19ft 5in | 2ft 6in | 400 | 4 Brush Electric |



30AM ▲

BOOMS

Towable Boom Lifts

| Model | Platform Height (ft-in) | Machine Width (ft-in) | Platform Capacity (lbs) | Machine Weight (lbs) |
|-------|-------------------------|-----------------------|-------------------------|----------------------|
| T350 | 34ft 5in | 4ft 9in | 500 | 3,400 |
| T500J | 50ft | 5ft 7in | 500 | 4,800 |

Compact Crawler Boom (comes in gas or electric)

| Model | Platform Height (ft-in) | Machine Width (ft-in) | Platform Capacity (lbs) | Machine Weight (lbs) |
|--------|-------------------------|-----------------------|-------------------------|----------------------|
| X430AJ | 50ft | 2ft 5in | 500 | 4,392 |
| X500AJ | 39ft | 2ft 7in | 500 | 5,071 |
| X600AJ | 59ft 3in | 2ft 7in | 500 | 6,571 |
| X770AJ | 84ft | 3ft 3in | 500 | 9,665 |



X500AJ ▲



19- 180' Lift Height

With four decades of experience, Genie® provides the most advanced lifting equipment in the industry and a full line of products that offer unmatched performance, safety and reliability.



Articulating Booms - Electric & Bi-Energy

| Model | Working Height Max (ft) | Horizontal Reach (ft) | Lift Capacity (lbs) | Power Source |
|-------------------|-------------------------|-----------------------|---------------------|-----------------------|
| Z-30/20 N | 36 | 21.5 | 500 | 48V DC |
| Z-30/20N RJ | 35.2 | 20.6 | 500 | 48V DC |
| Z-34/22 DC | 40.6 | 22.3 | 500 | 48V DC |
| Z-34/22 Bi-Energy | 40.6 | 22.3 | 500 | 48V DC/Kubota 13.3 hp |
| Z-40/23N | 46.5 | 22.8 | 500 | 48V DC |
| Z-40/23 RJ | 46.5 | 22.8 | 500 | 48V DC |
| Z-45/25 DC & Bi | 51.6 | 25.00 | 500 | 48V DC |
| Z-45/25J DC & Bi | 51.9 | 25.1 | 500 | 48V DC |
| Z-60/37J DC&FE | 65.7 | 36.70 | 500 | 48V DC |



Articulating Booms - Diesel Engine

| Model | Working Height Max (ft) | Horizontal Reach (ft) | Lift Capacity (lbs) | Power Source |
|----------------|-------------------------|-----------------------|---------------------|--|
| Z-34/22 IC 2WD | 40.6 | 22.3 | 500 | Kubota gas or diesel |
| Z-34/22 IC 4WD | 40.10 | 22.3 | 500 | Kubota gas or diesel |
| Z-45/25 RT | 51.10 | 24.7 | 500 | Ford, Duetz or Perkins - gas or diesel |
| Z-45/25J RT | 52.1 | 24.8 | 500 | Ford, Duetz or Perkins - gas or diesel |
| Z-62/40 | 67.11 | 40.11 | 500 | Ford, Duetz or Perkins - gas or diesel |
| Z-80/60 | 84 | 60 | 500 | Ford, Duetz or Perkins - gas or diesel |



Telescopic Booms

| Model | Working Height Max (ft) | Horizontal Reach (ft) | Lift Capacity (lbs) | Power Source |
|-----------------|-------------------------|-----------------------|---------------------|---|
| S-40 | 46 | 31.8 | 500 | Ford, Duetz or Perkins - gas or diesel |
| S-45 | 51 | 36.8 | 500 | Ford, Duetz or Perkins - gas or diesel |
| S-60 X/ S-60 XC | 64.4 | 50.10 | 500 | Ford, Duetz or Perkins - gas or diesel |
| S-65 | 71.0 | 56.2 | 500 | Ford, Duetz or Perkins - gas or diesel |
| S-80X | 86 | 71.6 | 500/1,000 | Duetz, Perkins or Continental - gas or diesel |
| S-85 | 91 | 76.6 | 500 | Duetz, Perkins or Continental - gas or diesel |
| S-100 | 106 | 75 | 750 | Duetz or Perkins diesel |
| S-105 | 111 | 80 | 500 | Duetz or Perkins diesel |
| S-125 | 131.2 | 80 | 500 | Duetz or Perkins diesel |
| SX-135 | 141 | 90 | 500 | Duetz or Perkins diesel |
| SX-150 | 158 | 80 | 750 | Duetz or Perkins diesel |
| SX-180 | 186 | 80 | 750 | Duetz or Perkins diesel |



AWP-36S ▲

Slab Scissor Lifts

| Model | Working Height Max (ft) | Horizontal Reach (ft) | Lift Capacity (lbs) | Power Source |
|------------|-------------------------|-----------------------|---------------------|--------------|
| GS-1530 | 21 | 2.5 | 600 | 24V DC |
| GS-1930 | 25 | 2.5 | 500 | 24V DC |
| GS-2032 | 26 | 2.8 | 800 | 24V DC |
| GS-2632 | 32 | 2.8 | 500 | 24V DC |
| GS-3232 | 38 | 2.8 | 500 | 24V DC |
| GS-2046 | 26 | 3.11 | 1,200 | 24V DC |
| GS-2646 | 32 | 3.11 | 1,000 | 24V DC |
| GS-3246 | 38 | 3.11 | 700 | 24V DC |
| GS-2669 DC | 32 | 5.3 | 1,500 | 48V DC |
| GS-3369 DC | 39 | 5.3 | 1,000 | 48V DC |
| GS-4047 | 45 | 3.11 | 550 | 48V DC |
| GS-4069 DC | 46 | 5.3 | 800 | 48V DC |



GS-4069DC ▲



AWP-36S ▲

Aerial Work Platforms

| Model | Working Height Max (ft) | Lift Capacity (lbs) | Platform Height |
|---------|-------------------------|---------------------|-----------------|
| AWP-20S | 26ft 1in | 350 | 20ft 1in |
| AWP-25S | 30ft 10in | 350 | 25ft 10in |
| AWP-30S | 35ft 6in | 350 | 29ft 6in |
| AWP-36S | 42ft 5in | 350 | 36ft 5in |
| AWP-40S | 46ft 4in | 300 | 40ft 4in |

Runabout

| Model | Working Height Max (ft) | Lift Capacity (lbs) | Platform Height |
|-------|-------------------------|---------------------|-----------------|
| GR12 | 17ft 5in | 500 | 11ft 5in |
| GR15 | 20ft 8in | 500 | 14ft 8in |
| GR20 | 25ft 11in | 350 | 19ft 11in |

Quickstock

| Model | Working Height Max (ft) | Lift Capacity (lbs) | Platform Height |
|-------|-------------------------|---------------------|-----------------|
| QS12 | 17ft 5in | 500 | 11ft 5in |
| QS15 | 20ft 8in | 500 | 14ft 8in |
| QS20 | 25ft 11in | 350 | 19ft 11in |



GR20 ▲



QS15 ▲

Warehouse Systems



Kelly Tractor's experience warehouse operations, design and logistics experts will make recommendations to maximize the efficiency of your storage and racking systems to insure you are utilizing all of your space to the fullest.

WE'LL SAVE YOU MONEY AND INCREASE YOUR SPACE

AT NO CHARGE.

Learn how Kelly Tractor's professionals will evaluate the efficiency of your warehouse space and create a customized design that can increase your usable area by up to 40%. There is no cost for the evaluation.

Special Considerations:

- Heavy
- Light
- Odd sized
- Narrow isle
- Reach and straddle
- Long load
- Order pickers
- Pallets
- Low mast
- Cushion/pneumatic tire
- Gas/LP/electric/diesel

Storage and Racking Systems:

- Structural Selective Rack
- Hi-Line Storage Systems
- Secure Pin Cantilever Rack
- Structural Cantilever Rack
- Drive-In/Drive Thru Systems
- Pushback Systems
- Pallet Flow
- Rack Supported Buildings
- Custom Fabrication Services

Loading Dock Equipment:

- Edge of Dock Levelers
- Hydraulic Edge of Dock Levelers
- Mechanical Pit Levelers
- Hydraulic Pit Levelers
- Hydraulic Vertical Storing Levelers
- Automatic Trailer Restraints
- Mechanical Trailer Restraints
- Dock Seals
- Dock Shelters