

WHY WORK AT KELLY TRACTOR?

Kelly Tractor is a fourth-generation, family owned business that values our extended family of employees. We strive to ensure that job opportunities provide generous benefits, including a supportive workplace that gives you the chance to build and apply your skills alongside some of the industry's top professionals. But instead of listening to us, see what our employees are saying!

EMPLOYEE TESTIMONIALS



I had worked for a short time at a construction company as a parts runner picking up parts at Kelly Tractor, so when I left there, I applied for a job in the parts department because of the way I was treated as a customer. I only needed a summer job. I never left! There was a lot to learn but they allowed me to learn and grow and I enjoyed the challenge. Upper management and the owners of the company promoted me to Parts Manager when I was only twenty-six, they believed in me. The company always tries to promote from within and has always shared their vision of taking care of the customer. They allow you to be part of the company. I am proud to say I have worked here forty years and have enjoyed coming to work every day.

– **Sandy Zeeman, Parts Manager, Ft. Myers, employed since October 1979**



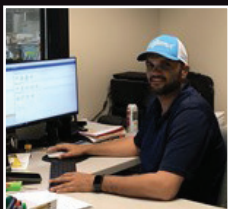
In 2003 after retiring from a twenty-two-year military career, I applied for an open position at Kelly Tractor. During the interview process I was introduced to several employees who had been at Kelly Tractor for twenty-five plus years and they were very proud to share their insight into the company. I thought to myself this company must be doing something right to attract and retain and keep these long-term employees engaged for all these years. I accepted their offer of employment and it has been a fulfilling and rewarding career and years later I am happy to share my insight into Kelly Tractor! Please join our team!

– **John Horn, Human Resources Manager, employed since December 2003**



I'm proud to say that I will be soon be celebrating my 38th anniversary working at Kelly Tractor Co. I truly enjoy coming to work in such a family, friendly, atmosphere, a culture of care and commitment to its employees and customers has always been one of Kelly Tractor's highest concerns. It is inspiring to work for a company who honestly wants to do right by their customers and employees. It would be easy to work for another company and receive a paycheck but not just any company can create a culture that makes me excited to come to work every day! I'm proud to be part of this exceptional organization.

– **Ron Chase, Parts Counter Salesperson, employed since July 1981**



I have been with Kelly Tractor for 14 years and forever grateful for every opportunity that has been presented to me. I am a second-generation employee. I started as a parts runner and through hard work and determination, I am now the General Line Service Manager for the Miami branch. I am passionate about the work I do in this company and it is reflective in my work. Kelly Tractor Co. is a company with a vision of success, and I am here to grow with it. I have recommended Kelly Tractor Co. to numerous people for employment in the past and will continue to do so!

– **Joaquin Canamero, Service Manager, employed since February 2006**



JOIN The Kelly Tractor Co. TEAM!

KELLY TRACTOR



Serving The Industry Since 1933

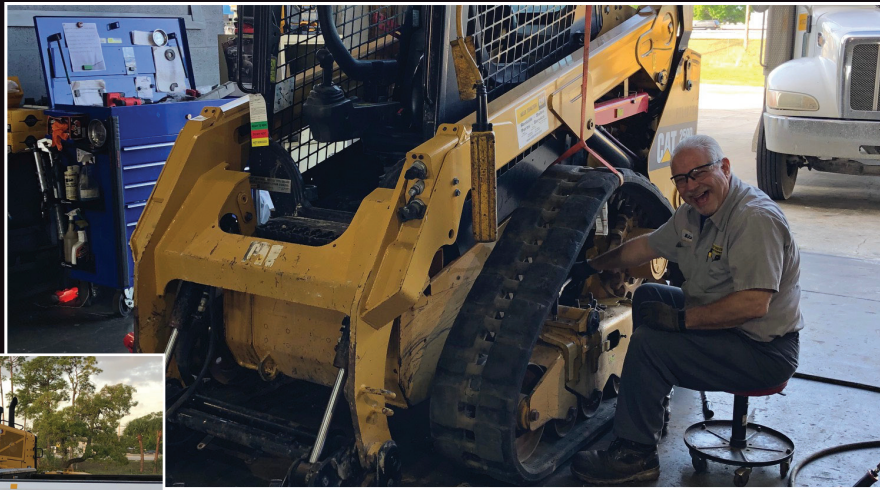
OUR HISTORY

Serving South Florida since 1933!

Kelly Tractor serves its customers with a wide variety of machines from some of the world's foremost manufacturers.

Since 1933, Kelly Tractor Co., has provided rentals, leasing, sales and servicing of all types of construction and industrial equipment to the following markets: highway and bridge building, water and sewer, land development, housing, aggregate quarries, agriculture, warehousing, seaports, marinas, and other markets.

Kelly Tractor Co. and its affiliates employ more than 500 people in South Florida and more than 150 of them provide parts and service support. The company is headquartered in a 240,000 square-foot complex in Miami, with branch locations in Davie, West Palm Beach, Clewiston, Ft. Myers, Orlando (AG/CAT/Used forklifts and Link-Belt cranes) and Mulberry and Boyd, Texas (IMT drill rigs, Link-Belt Cranes).



CULTURE

We value our extended family of employees!

At Kelly Tractor Co, a family-owned, fourth generation Caterpillar dealership, we pride ourselves on creating a safe, rewarding and team-centered atmosphere. Our commitment to safety and our employees helps us provide a work environment that attracts, trains and rewards employees, while enabling personal and professional growth. We proudly employ military servicemen and servicewomen. Come join our team!

MISSION

As a fourth-generation family owned business, our mission is to provide our customers with exceptional value for their equipment and power systems needs through:

- » Delivering the best product solutions and technical support by the most experienced and trained employees using state of the art tools.
- » Leveraging our financial strength to provide flexible options for our customers.
- » Fostering a safe and environmentally sensible workplace.
- » Creating an atmosphere of mutual respect and teamwork.
- » Being trusted and recognized as a long-established member of our community.



Kelly Tractor wouldn't be where we are today without the hard work and dedication of our associates. That's why we are committed to offering competitive pay and the benefits you need for a financially secure and professionally fulfilling career. Please see our separate Employee Benefits brochure for our comprehensive listing of our exceptional benefits!

SAFETY

Think Safety! We are committed to providing a safe work environment and always putting safety first. At Kelly Tractor we foster a culture where everyone is responsible for safety!



VISION

The Premier Solutions provider for our Valued Partners.

STRATEGY

- » Foster an environment that stimulates our employees to achieve professional growth and personal satisfaction.
- » Create and cherish long term, mutually rewarding relationships with our valued partners by providing exceptional service.
- » Sets a future direction that pulls our team together toward common goals.

