

Electric Cushion Tire Lift Trucks

Capacity: 3,000-6,500 lb



E3000-E6500 Series

Top Performance

Demanding applications call for tough equipment. Cat® lift trucks are built for diverse, rugged applications without sacrificing operator comfort and convenience. With an extensive list of premium standard features, the E3000-E6500 Series is designed to get the job done.



Cat lift trucks set the standard for the ultimate lifting experience. Exceptional comfort, hardworking products you can depend on and industry-leading customer service make these lift trucks the only choice for your material handling needs.

Combining the latest in advanced AC control systems, operator ergonomics, and customized performance, the E3000-E6500 Series of four-wheel electric cushion tire lift trucks is up to any application challenge. Manufactured in Houston, Texas, and supported by the industry's best dealer network, these trucks provide the productivity you expect.



| Model | Base Capacity At 24 in. Load Center (lb) | Minimum Aisle Width/ Add Load Length And Clearance (in) | Battery Compartment L x W x H (in) |
|--------|--|---|------------------------------------|
| E3000 | 3,000 | 85.0 | 27.8 x 35.8 x 23.3 |
| E3500 | 3,500 | 85.0 | 27.8 x 35.8 x 23.3 |
| EC4000 | 4,000 | 87.5 | 27.8 x 35.8 x 23.3 |
| E4000 | 4,000 | 90.0 | 30.5 x 39.5 x 23.3 |
| E5000 | 5,000 | 90.0 | 30.5 x 39.5 x 23.3 |
| EX5000 | 5,000 | 94.0 | 34.4 x 39.5 x 23.3 |
| E5500 | 5,500 | 94.0 | 34.4 x 39.5 x 23.3 |
| E6000 | 6,000 | 96.5 | 34.4 x 39.5 x 23.3 |
| E6500 | 6,500 | 96.5 | 34.4 x 39.5 x 23.3 |

QUALITY

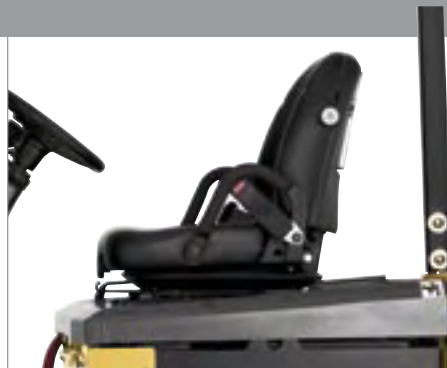


Comfortable Ride

Adjustable for operator weight, lumbar support and position, the full-suspension seat includes an ergonomic operator restraint system which helps support the operator even when turning to face rearward.

Steer Position Control

The tilt steering column offers infinitely adjustable tilt within a 21 degree range for improved operator comfort and productivity.



Adjustable seating for increased comfort



Tilt steering column

Advanced Ergonomics

A comfortable operator is a productive operator – and the E3000-E6500 Series gives your operators the tools they need to do their jobs efficiently.



Spacious Floor Area

A generous amount of foot room is provided for prolonged operator comfort during a shift. The treaded surface of the heavy rubber floor mat provides optimum traction when the operator enters or exits the compartment.



Open floor design for enhanced control

Premium Display Panel

The easy-to-read LCD central vehicle monitoring system includes battery state-of-charge, hour meter and travel speed indicators. Maintenance reminders are provided in the LED section of the display, allowing for operator awareness and maximized uptime for your lift truck.



Optimized display panel raises awareness

Added Operator Protection

Designed to help prevent unintended movement of the lift truck, the Presence Detection System (PDS) disables all hydraulic functions and returns the drive to neutral when the operator is not in the operating position. Audible and visual alarms are also included to provide additional security for the operator.



Added operator protection

RELIABILITY

Powerful Technology

The E3000-E6500 Series is built to maximize uptime. From the low-maintenance components to the high-efficiency systems, these lift trucks will spend their time on what matters most – moving product.



Optimized Visibility

With a wider view between the mast channels than many competing models, the E3000-E6500 lift trucks are designed to provide increased visibility to the forks, load and surrounding area.



Increased visibility

Effortless Serviceability

With extended service intervals, display-based indicators and reminders, and easy access to service components, you can count on maximizing uptime and lowering maintenance costs with your Cat lift truck.



Minimized service time



More Power, Less Energy

Reliable, energy-saving AC power delivers up to a 40 percent increase in travel speeds in comparison with earlier DC-powered models. These AC trucks also deliver smooth, powerful operation with lower noise levels.

Efficient Performance

This truck offers both improved efficiency through the design of the AC control system and optimal energy recovery through the regenerative braking system. To give even more control, torque and speed are controlled separately, helping to ensure smooth driving on uneven surfaces or ramps.



Efficient AC power



Regenerative braking system



Solutions for every application

CUSTOMER SERVICE

Best Warranty In The Industry

We stand behind our products, giving you peace of mind by helping your trucks stay on the job, day after day. Every new Cat lift truck is covered by a 2-year/unlimited hours warranty that includes parts and labor regardless of service hours. All components and systems are covered. With our standard 3-year/6,000 hours extended powertrain warranty, you'll have the confidence that only comes from owning a Cat lift truck.



Free Loaner Service Guarantee*

If your lift truck is not repaired right the first time or within the quoted time, you will receive a free loaner truck while the repair is completed.

Parts Fast Or Parts Free*

The Parts Fast Or Parts Free Guarantee ensures next-business-day delivery of parts for all brands of lift trucks, or they're free, including freight. If your part doesn't come in by the next business day, we pay for it.



Guaranteed to keep you moving



Parts for all brands of lift trucks



Flexible Financing Options*

Financing your next Cat lift truck is easy with our wide range of flexible leasing and purchasing options. Whether you want to finance or lease, your local Cat lift truck dealer can help customize a package tailored to your specific needs.



Custom financing packages

Dealers You Can Depend On

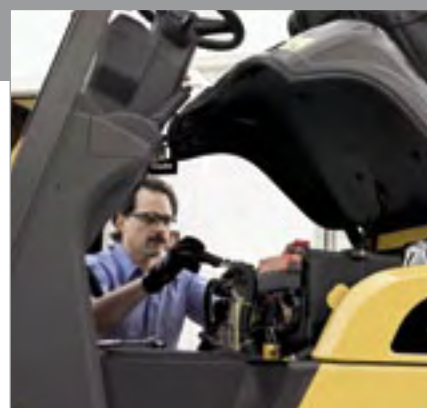
With hundreds of dealer locations throughout North and South America, Cat lift truck dealers provide more than just lift trucks. From flexible financing options, parts, service and product support, our dealers are unsurpassed.



Professionals you can depend on

Free Planned Maintenance*

Proper maintenance of your truck helps assure top performance over the long haul. That's why every new Cat lift truck gets its first planned maintenance completed by your local Cat lift truck dealer at no cost to you.



Quality service at the right price

* Programs may be subject to change without notice and may vary by region. Please ask your local Cat® lift truck dealer for complete terms and conditions.

Specifications

| Characteristics | | | | E3000 | | E3500 | | EC4000 | | | | |
|-----------------|---|---|-------------------------------|-----------|-----------|---------------------------|----------------|---------------------------|----------------|---------------------------|----------------|-------|
| 1 | Capacity | at rated load center | | lb | kg | 3,000 | 1,500 | 3,500 | 1,800 | 4,000 | 1,800 | |
| 2 | | at load center – distance | | in | mm | 24.0 | 500 | 24.0 | 500 | 24.0 | 600 | |
| 3 | Power | electric, diesel, gasoline, LP gas | | electric | | electric | | electric | | | | |
| 4 | Tire type | cushion, pneumatic | | cushion | | cushion | | cushion | | | | |
| 5 | Wheels (x=driven) | number front / rear | | 2x /2 | | 2x /2 | | 2x /2 | | | | |
| Dimensions | | | | E3000 | | E3500 | | EC4000 | | | | |
| 11 | Lift with standard two-stage mast | maximum fork height | | in | mm | 130 | 3,320 | 130 | 3,320 | 130 | 3,320 | |
| 12 | | free fork height | | in | mm | 4.5 | 115 | 4.5 | 115 | 4.5 | 115 | |
| 13 | Forks | thickness x length x width | | in | mm | 1.4x42.0x3.9 | 35.0x1,070x100 | 1.4x4.2x3.9 | 35.0x1,070x100 | 1.4x42.0x3.9 | 35.0x1,070x100 | |
| | Fork spacing | out-to out minimum / maximum | | in | mm | 9.4/32.0 | 240/818 | 9.4/32.0 | 240/818 | 9.4/32.0 | 240/818 | |
| 14 | Tilt | forward / backward | | deg | | 5.0°/6.0° | | 5.0°/6.0° | | 5.0°/6.0° | | |
| 15 | Overall Dimensions | length to fork face | | in | mm | 78.0 | 1,980 | 78.0 | 1,980 | 81.0 | 2,055 | |
| 16 | | width | with standard tires | | in | mm | 37.0 | 945 | 37.0 | 945 | 39.0 | 995 |
| | | | with wide stance drive wheels | | in | mm | 39.0 | 996 | 39.0 | 996 | 41.0 | 1,045 |
| 17 | | height | with lowered mast | | in | mm | 83.0 | 2,105 | 83.0 | 2,105 | 83.0 | 2,105 |
| 18 | | | seat height to SIP | | in | mm | 48.0 | 1,220 | 48.0 | 1,220 | 48.0 | 1,220 |
| 19 | | | to top of overhead guard | | in | mm | 86.0 | 2,180 | 86.0 | 2,180 | 86.0 | 2,180 |
| 20 | | | with extended mast | | in | mm | 180 | 4,570 | 180 | 4,570 | 180 | 4,570 |
| 21 | Minimum outside turning radius | | in | mm | 70.5 | 1,790 | 70.5 | 1,790 | 72.5 | 1,840 | | |
| 22 | Load moment constant | | in | mm | 14.8 | 376 | 14.8 | 376 | 14.8 | 376 | | |
| 23 | Minimum aisle – 90° stack – zero clearance without load | | in | mm | 85.0 | 2,165 | 85.0 | 2,165 | 87.5 | 2,220 | | |
| Performance | | | | E3000 | | E3500 | | EC4000 | | | | |
| 40 | Speeds | travel loaded / empty | 36V | mph | km/h | 10.2/11.2 | 16.4/18.0 | 9.3/10.8 | 14.9/17.3 | 9.3/10.8 | 14.9/17.3 | |
| | | | 48V | mph | km/h | 11.3/11.3 | 18.2/18.2 | 11.3/11.3 | 18.2/18.2 | 11.3/11.3 | 18.2/18.2 | |
| 41 | | lift speed loaded / empty | 36V | fpm | mm/s | 75.0/106 | 0.38/0.54 | 71.30/106 | 0.36/0.54 | 67.0/108 | 0.34/0.55 | |
| | | | 48V | fpm | mm/s | 104/140 | 0.53/0.71 | 96.0/140 | 0.49/0.71 | 93.0/140 | 0.47/0.71 | |
| 42 | lowering speed loaded / empty | 36V | fpm | mm/s | 98.0/81.0 | 0.50/0.41 | 98.0/81.0 | 0.50/0.41 | 98.0/81.0 | 0.50/0.41 | | |
| | | 48V | fpm | mm/s | 98.0/81.0 | 0.50/0.41 | 98.0/81.0 | 0.50/0.41 | 98.0/81.0 | 0.50/0.41 | | |
| 43 | Gradeability | loaded at 1 mph (1.6 km) | 36V | % | | 24.0 | | 21.0 | | 21.0 | | |
| | | | 48V | % | | 25.0 | | 22.0 | | 22.0 | | |
| | | maximum empty | 36V | % | | 23.0 | | 19.0 | | N/A | | |
| | | | 48V | % | | 23.0 | | 19.0 | | N/A | | |
| Weight | | | | E3000 | | E3500 | | EC4000 | | | | |
| 50 | Empty | with minimum weight battery | | lb | kg | 6,200 | 2,825 | 6,800 | 3,075 | 7,400 | 3,350 | |
| 51 | Axle load | with rated load | front | lb | kg | 8,000 | 3,750 | 8,800 | 4,200 | 9,400 | 4,250 | |
| | | | rear | lb | kg | 1,200 | 570 | 1,480 | 660 | 1,940 | 910 | |
| | | without load | front | lb | kg | 2,500 | 1,130 | 2,320 | 1,050 | 2,070 | 940 | |
| | | | rear | lb | kg | 3,725 | 1,690 | 4,425 | 2,010 | 5,300 | 2,410 | |
| Chassis | | | | E3000 | | E3500 | | EC4000 | | | | |
| 60 | Tire size | front, standard cushion tires | | in | mm | 18.0x6.0x12.2 | 457x152x308 | 18.0x6.0x12.2 | 457x152x308 | 18.0x7.0x12.2 | 457x178x308 | |
| | | rear cushion tires | | in | mm | 14.0x4.5x8.0 | 356x114x203 | 14.0x4.5x8.0 | 356x114x203 | 14.0x4.5x8.0 | 356x114x203 | |
| 62 | Wheel base | | | in | mm | 46.0 | 1,170 | 46.0 | 1,170 | 46.0 | 1,170 | |
| 63 | Tread width | front, standard cushion tires | | in | mm | 31.0 | 793 | 31.0 | 793 | 32.0 | 818 | |
| | | rear cushion tires | | in | mm | 32.5 | 826 | 32.5 | 826 | 32.5 | 826 | |
| 65 | Ground clearance | at lowest point at mast | | in | mm | 3.0 | 75.0 | 3.0 | 75.0 | 3.0 | 75.0 | |
| 66 | | at center of wheel base | | in | mm | 4.6 | 118 | 4.6 | 118 | 4.6 | 118 | |
| 67 | Brakes | service | | type | | foot-operated, hydraulic | | foot-operated, hydraulic | | foot-operated, hydraulic | | |
| 68 | | parking | | type | | hand-operated, mechanical | | hand-operated, mechanical | | hand-operated, mechanical | | |
| Powertrain | | | | E3000 | | E3500 | | EC4000 | | | | |
| 80 | Battery | type | | lead-acid | | lead-acid | | lead-acid | | | | |
| 81 | | maximum capacity at 6 hr. discharge rate | 36V | Ah | kWh | 880 | 31.7 | 880 | 31.7 | 880 | 31.7 | |
| 82 | | | 48V | Ah | kWh | 770 | 370 | 770 | 370 | 770 | 370 | |
| 83 | weight, minimum | | lb | kg | 1,650 | 750 | 1,650 | 750 | 1,650 | 750 | | |
| 84 | Motors | traction output (60 min. rating) 36V/48V | | HP | kW | 8.3/9.2 | 6.2/6.8 | 8.3/9.2 | 6.2/6.8 | 8.3/9.2 | 6.2/6.8 | |
| 86 | | lift output optional (20% rating) 36V/48V | | HP | kW | 9.9/15.7 | 7.4/11.7 | 9.9/15.7 | 7.4/11.7 | 9.9/15.7 | 7.4/11.7 | |
| 87 | Controls | drive | | type | | AC transistor | | AC transistor | | AC transistor | | |
| 88 | | hydraulic | | type | | AC transistor | | AC transistor | | AC transistor | | |
| 89 | Relief Pressure | for attachments at auxiliary | | psi | bar | 2,250 | 155 | 2,250 | 155 | 2,250 | 155 | |

NOTE: These specifications assume the use of drive axles, tires and tilt angles specified. Any modification to specifications, or any other combination of specifications made after the shipment of the truck, requires prior written approval from Mitsubishi Caterpillar Forklift America Inc. (MCFA). (See ANSI/ITSDF B56.1.) Also be advised that overall operating visibility may be affected by the mast configuration and mast options of your truck. Therefore, you may need to add ancillary (auxiliary) devices or modify your operating practices. Consult your dealer for further information.

| E4000 | | E5000 | | EX5000 | | E5500 | | E6000 | | E6500 | |
|---------------------------|----------------|---------------------------|----------------|---------------------------|----------------|---------------------------|----------------|---------------------------|----------------|---------------------------|----------------|
| 4,000 | 2,000 | 5,000 | 2,500 | 5,000 | 2,500 | 5,500 | 2,500 | 6,000 | 3,000 | 6,500 | 3,000 |
| 24.0 | 500 | 24.0 | 500 | 24.0 | 500 | 24.0 | 600 | 24.0 | 500 | 24.0 | 600 |
| electric | | electric | | electric | | electric | | electric | | electric | |
| cushion | | cushion | | cushion | | cushion | | cushion | | cushion | |
| 2x /2 | | 2x /2 | | 2x /2 | | 2x /2 | | 2x /2 | | 2x /2 | |
| E4000 | | E5000 | | EX5000 | | E5500 | | E6000 | | E6500 | |
| 131 | 3,340 | 131 | 3,340 | 131 | 3,340 | 131 | 3,340 | 130 | 3,310 | 131 | 3,340 |
| 5.1 | 130 | 5.1 | 130 | 5.1 | 130 | 5.1 | 130 | 5.3 | 135 | 5.3 | 135 |
| 1.6x42.0x3.9 | 40.0x1,070x100 | 1.6x42.0x3.9 | 40.0x1,070x100 | 1.6x42.0x3.9 | 40.0x1,070x100 | 1.6x42.0x3.9 | 40.0x1,070x100 | 1.8x42.0x4.9 | 45.0x1,070x125 | 1.8x42.0x4.9 | 45.0x1,070x125 |
| 9.7/35.0 | 246/893 | 9.7/35.0 | 246/893 | 9.7/35.0 | 246/893 | 9.7/35.0 | 246/893 | 11.2/38.0 | 285/960 | 11.2/38.0 | 285/960 |
| 5.0°/6.0° | | 5.0°/6.0° | | 5.0°/6.0° | | 5.0°/6.0° | | 5.0°/6.0° | | 5.0°/6.0° | |
| 82.0 | 2,085 | 82.0 | 2,085 | 86.0 | 2,185 | 86.0 | 2,185 | 89.0 | 2,255 | 89.0 | 2,255 |
| 41.5 | 1,055 | 41.5 | 1,055 | 41.5 | 1,055 | 43.5 | 1,103 | 43.5 | 1,103 | 43.5 | 1,103 |
| 43.5 | 1,103 | 43.5 | 1,103 | 43.5 | 1,103 | N/A | | N/A | | N/A | |
| 83.5 | 2,110 | 83.5 | 2,110 | 83.5 | 2,110 | 83.5 | 2,110 | 83.5 | 2,110 | 83.5 | 2,110 |
| 50.8 | 1,289 | 50.8 | 1,289 | 50.8 | 1,289 | 50.8 | 1,289 | 50.8 | 1,289 | 50.8 | 1,289 |
| 87.0 | 2,210 | 87.0 | 2,210 | 87.0 | 2,210 | 87.0 | 2,210 | 87.0 | 2,210 | 87.0 | 2,210 |
| 180 | 4,570 | 180 | 4,570 | 180 | 4,570 | 180 | 4,570 | 179 | 4,550 | 179 | 4,550 |
| 74.5 | 1,890 | 74.5 | 1,890 | 78.5 | 1,990 | 78.5 | 1,990 | 80.5 | 2,045 | 80.5 | 2,045 |
| 15.5 | 394 | 15.5 | 394 | 15.5 | 394 | 15.5 | 394 | 16.0 | 406 | 16.0 | 406 |
| 90.0 | 2,285 | 90.0 | 2,285 | 94.0 | 2,385 | 94.0 | 2,385 | 96.5 | 2,455 | 96.5 | 2,455 |
| E4000 | | E5000 | | EX5000 | | E5500 | | E6000 | | E6500 | |
| 9.6/10.8 | 15.5/17.4 | 9.6/10.8 | 15.5/17.4 | 9.6/10.8 | 15.5/17.4 | 9.3/10.6 | 15.0/17.0 | 9.1/10.6 | 14.6/17.1 | 9.0/10.6 | 14.5/17.1 |
| 11.3/11.3 | 18.2/18.2 | 11.3/11.3 | 18.2/18.2 | 11.3/11.3 | 18.2/18.2 | 11.3/11.3 | 18.2/18.2 | 11.3/11.3 | 18.2/18.2 | 11.3/11.3 | 18.2/18.2 |
| 63.0/106 | 0.32/0.54 | 55.0/106 | 0.28/0.54 | 55.0/106 | 0.28/0.54 | 55.0/106 | 0.28/0.54 | 49.0/93.0 | 0.25/0.47 | 45.0/93.0 | 0.23/0.47 |
| 89.0/124 | 0.45/0.63 | 75.0/128 | 0.38/0.65 | 75.0/128 | 0.38/0.65 | 75.0/128 | 0.38/0.65 | 71.0/108 | 0.36/0.55 | 61.0/110 | 0.31/0.56 |
| 98.0/98.0 | 0.50/0.50 | 98.0/98.0 | 0.50/0.50 | 98.0/98.0 | 0.50/0.50 | 98.0/98.0 | 0.50/0.50 | 98.0/89.0 | 0.50/0.45 | 98.0/89.0 | 0.50/0.45 |
| 98.0/98.0 | 0.50/0.50 | 98.0/98.0 | 0.50/0.50 | 98.0/98.0 | 0.50/0.50 | 98.0/98.0 | 0.50/0.50 | 98.0/89.0 | 0.50/0.45 | 98.0/89.0 | 0.50/0.45 |
| 27.0 | | 25.0 | | 25.0 | | 24.0 | | 23.0 | | 20.2 | |
| 27.0 | | 26.0 | | 26.0 | | 25.0 | | 23.0 | | 21.0 | |
| 24.0 | | 23.0 | | 24.0 | | 24.0 | | 21.0 | | N/A | |
| 24.0 | | 23.0 | | 24.0 | | 24.0 | | 21.0 | | N/A | |
| E4000 | | E5000 | | EX5000 | | E5500 | | E6000 | | E6500 | |
| 8,100 | 3,700 | 9,200 | 4,200 | 9,000 | 4,100 | 9,400 | 4,275 | 10,400 | 4,725 | 10,800 | 4,900 |
| 10,500 | 4,950 | 12,600 | 5,900 | 12,300 | 5,800 | 13,100 | 5,900 | 14,100 | 6,700 | 14,900 | 6,750 |
| 1,600 | 750 | 1,650 | 780 | 1,740 | 820 | 1,890 | 870 | 2,290 | 1,070 | 2,480 | 1,125 |
| 3,400 | 1,540 | 3,675 | 1,670 | 3,650 | 1,660 | 3,550 | 1,610 | 3,725 | 1,680 | 3,765 | 1,700 |
| 4,750 | 2,150 | 5,600 | 2,525 | 5,400 | 2,440 | 5,900 | 2,675 | 6,700 | 3,050 | 7,000 | 3,175 |
| E4000 | | E5000 | | EX5000 | | E5500 | | E6000 | | E6500 | |
| 21.0x70x15.0 | 533x178x381 | 21.0x70x15.0 | 533x178x381 | 21.0x70x15.0 | 533x178x381 | 21.0x8.0x15.0 | 533x203x381 | 21.0x8.0x15.0 | 533x203x381 | 21.0x8.0x15.0 | 533x203x381 |
| 16.0x4.5x10.5 | 406x114x267 | 16.0x6.0x10.5 | 406x152x267 | 16.0x6.0x10.5 | 406x152x267 | 16.0x6.0x10.5 | 406x152x267 | 16.0x6.0x10.5 | 406x152x267 | 16.0x6.0x10.5 | 406x152x267 |
| 50.5 | 1,280 | 50.5 | 1,280 | 54.5 | 1,380 | 54.5 | 1,380 | 54.5 | 1,380 | 54.5 | 1,380 |
| 34.5 | 875 | 34.5 | 875 | 34.5 | 875 | 35.5 | 900 | 35.5 | 900 | 35.5 | 900 |
| 35.5 | 900 | 35.5 | 900 | 35.5 | 900 | 35.5 | 900 | 35.5 | 900 | 35.5 | 900 |
| 3.0 | 76.0 | 3.0 | 76.0 | 3.0 | 76.0 | 3.0 | 76.0 | 3.0 | 77.0 | 3.0 | 77.0 |
| 4.9 | 124 | 4.9 | 124 | 4.9 | 124 | 4.9 | 124 | 4.9 | 124 | 4.9 | 124 |
| foot-operated, hydraulic | | foot-operated, hydraulic | | foot-operated, hydraulic | | foot-operated, hydraulic | | foot-operated, hydraulic | | foot-operated, hydraulic | |
| hand-operated, mechanical | | hand-operated, mechanical | | hand-operated, mechanical | | hand-operated, mechanical | | hand-operated, mechanical | | hand-operated, mechanical | |
| E4000 | | E5000 | | EX5000 | | E5500 | | E6000 | | E6500 | |
| lead-acid | | lead-acid | | lead-acid | | lead-acid | | lead-acid | | lead-acid | |
| 1,320 | 475 | 1,320 | 475 | 1,540 | 55.4 | 1,540 | 55.4 | 1,540 | 55.4 | 1,540 | 55.4 |
| 990 | 50.9 | 990 | 50.9 | 1,100 | 52.8 | 1,100 | 52.8 | 1,100 | 52.8 | 1,100 | 52.8 |
| 2,200 | 1,000 | 2,600 | 1,180 | 3,100 | 1,410 | 3,100 | 1,410 | 3,100 | 1,410 | 3,100 | 1,410 |
| 12.1/14.2 | 9.0/10.6 | 12.1/14.2 | 9.0/10.6 | 12.1/14.2 | 9.0/10.6 | 12.1/14.2 | 9.0/10.6 | 13.7/17.2 | 10.2/12.8 | 13.7/17.2 | 10.2/12.8 |
| 12.7/20.3 | 9.4/17.3 | 12.7/20.3 | 9.4/17.3 | 12.7/20.3 | 9.4/17.3 | 12.7/20.3 | 9.4/17.3 | 13.8/23.2 | 10.3/17.3 | 13.8/23.2 | 10.3/17.3 |
| AC transistor | | AC transistor | | AC transistor | | AC transistor | | AC transistor | | AC transistor | |
| AC transistor | | AC transistor | | AC transistor | | AC transistor | | AC transistor | | AC transistor | |
| 2,250 | 155 | 2,250 | 155 | 2,250 | 155 | 2,250 | 155 | 2,250 | 155 | 2,250 | 155 |

OPTION PACKAGES

Enhance Your Experience

Cat lift trucks come equipped with features and options that allow you to get the job done. For those applications that require an extra level of protection for the truck and operator, Cat Lift Trucks offers several options that can enhance the productivity of your material handling fleet.



DC-DC Converter

Provides 300W of 12V power for electronics, such as scan guns, RF units and computers.

Battery Slide-In Rails

Allows convenient side extraction of the battery.

Forward Tilt Lockout

Restricts forward tilt to vertical to prevent lost loads and increase longitudinal stability. Full forward tilt is available by depressing the override button.

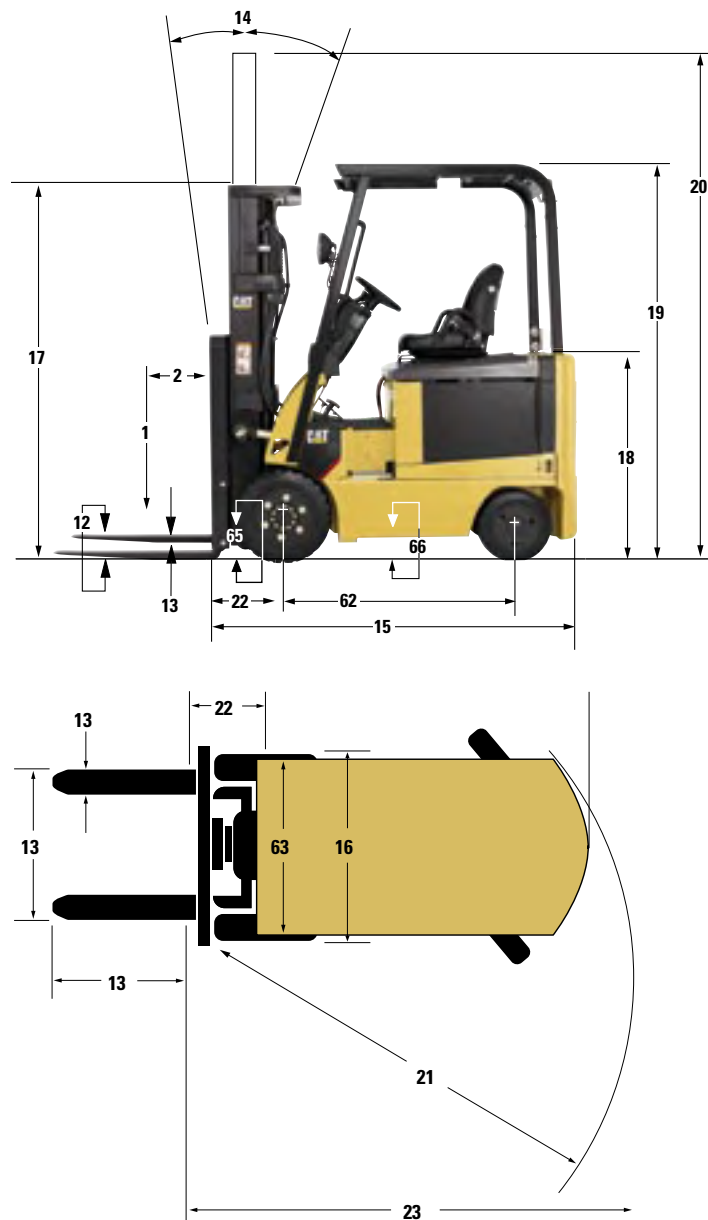
Rapid Shuttle Package

Includes a steering wheel knob and foot direction control for quick maneuverability and single-pedal directional control.

“Smart” Back-Up Alarm

The warning volume of the alarm self-adjusts based on noise level and activates when the direction is in reverse.

Call-out numbers shown in the diagram correspond to the first column of the specifications chart.



Safety Standards

These trucks meet American National Standards Institute/Industrial Truck Standards Development Foundation, ANSI/ITSDF B56.1.

UL-Classified by Underwriters Laboratories, Inc., as to fire and electric shock hazard only. Availability: Type E standard. Types ES and EE optional. Users should be aware of, and adhere to, applicable codes and regulations regarding operator training, use, operation and maintenance of powered industrial trucks, including:

- ANSI/ITSDF B56.1.
- NFPA 505, fire safety standard for powered industrial trucks - type designations, areas of use, maintenance and operation.
- Occupational Safety and Health Administration (OSHA) regulations that may apply.

Contact your Cat lift truck dealer for further information including operator training programs and auxiliary visual and audible warning systems, fire extinguishers, etc., as available for specific user applications and requirements. Specifications, equipment, technical data, photos and illustrations based on information at time of printing and subject to change without notice. Some products may be shown with optional equipment.



Quality

Reliability

Customer Service

Experienced professionals at your local dealership and on our National Accounts Team can assist you with your lift truck purchase or lease. Your Cat lift truck dealer can provide options and additional visual and audible warning devices geared toward your specific requirements. Operator training programs are also available to boost productivity and to help reduce the potential for product damage and personal injury.



Electric Cushion Tire Lift Trucks

Capacity: 3,000-6,500 lb

1-800-CAT-LIFT | www.cat-lift.com

Copyright © 2011 by MCFE. All rights reserved. CAT, CATERPILLAR, their respective logos, "Caterpillar Yellow" and the "Power Edge" trade dress, as well as corporate and product identity used herein, are trademarks of Caterpillar and may not be used without permission. All registered trademarks are the property of their respective owners. Some products may be shown with optional equipment. Printed in U.S.A.

CECM0023

03/11

CAT® Lift Trucks