

Take control with Link-Belt Pulse 2.0 RCL system and V-CALC



- 10" full color touch screen display
- NEW Auto-Level
- Telematics
- WiFi enabled for software updates
- 81 outrigger combinations
- Integrated RCL
- Incorporated swing arrest
- Real-time 360° Charts



- New Larger Operator's Seat w/ Joystick or Single Axis Controls
- Improved HVAC with Automatic Temperature Control
- Optimized Visibility
- 20° Cab Tilt
- 10" Pulse 2.0 Display: Touchscreen and Color
- Link-Belt Vision Package: 7" In-Cab Display
 - Right side swing
 - Main and auxiliary winch

120HT^{LB}

120-ton | 110 mt Hydraulic Truck Crane

Remarkable control, reliability and capacity performance

- ✓ 39.8' - 197' | 12.1 - 60 m SIX SECTION PIN & LATCH BOOM
- ✓ MULTIPLE SMARTFLY OPTIONS:
 - 2-PIECE 35'-58' OFFSETTABLE SMARTFLY
 - 3-PIECE 9.5'-35'-58' OFFSETTABLE SMARTFLY
- ✓ 263' | 80.2 m MAXIMUM TIP HEIGHT
- ✓ 6 BOOM EXTEND MODES TO MAXIMIZE LIFTING PERFORMANCE
- ✓ LINK-BELT PULSE 2.0 – TOTAL CRANE OPERATING SYSTEM WITH V-CALC AND TELEMATICS
- ✓ FULL LED LIGHTING PACKAGE WITH 4 ON-BOARD CAMERAS-STANDARD
- ✓ TRANSPORTS AT UNDER 93,500 LBS | 42 411 KG WELL EQUIPPED WITHOUT COUNTERWEIGHT
- ✓ NEW: **SMART-STACK COUNTERWEIGHT MONITORING SYSTEM**



Link-Belt[®]

C R A N E S

Lexington, Kentucky | www.linkbelt.com

120|HT^{LB}

120-ton | 110 mt
Hydraulic Truck Crane

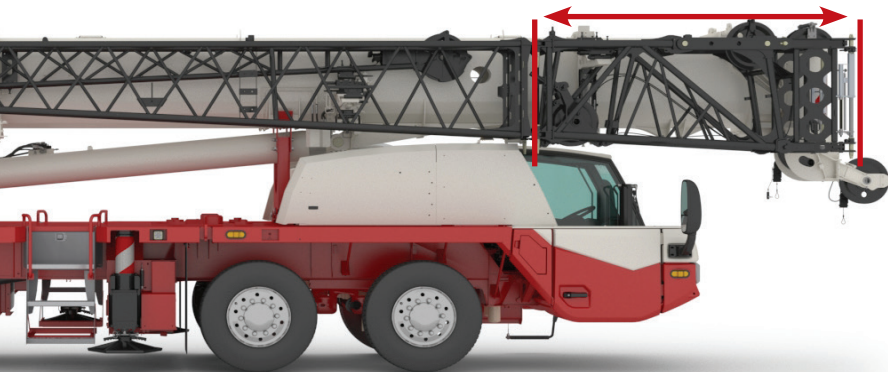
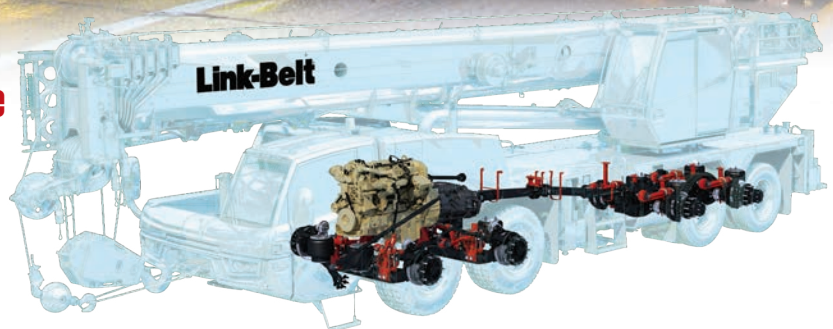
All New Carrier Cab

- **NEW Wider Carrier Cab:** 9" Wider than current truck crane cab.
- **"Smart Seat" Memory Suspension System** with Dual Position Lumbar Support
- **TPMS – Wireless Tire Pressure and Temperature Monitoring**
- **Integrated Pulse 2.0** and Camera views in one 7.5" Touch Screen Display

Link-Belt Truck Crane Chassis of the Future

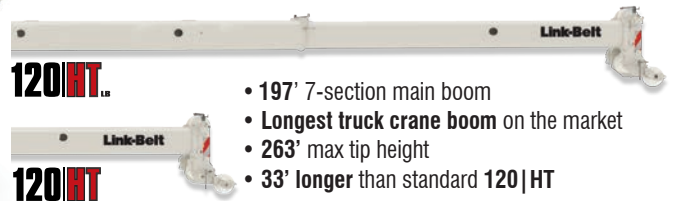
An Industry First suspension and axle configuration:

- **All new air-ride suspension and Air disc brakes**
- **No traditional Walking/Bogie Beam Suspension:** Reduces Weight and Improves Ride Quality



Attachment Options:

- **2 piece 35'-58' | 10.7m-17.7m Link-Belt SmartFly:** Lightweight simple one-person operation
- **3 piece SmartFly option:** Integrated 9.5' | 3 m for heavy lift or 2 load line lift applications



Transport configurations adaptable to any location

Transport under 93,500 lbs | 42 411 kg without counterweights



111,434 lbs | 50.5 mt maximum GAWR on 4 Axles allowing for 16,500 lbs | 7.5 mt counterweight payload



Link-Belt

CRANES

Lexington, Kentucky | www.linkbelt.com

© Link-Belt is a registered trademark. Copyright 2023. All rights reserved. We reserve the right to change designs and specifications at any time. Litho in U.S.A. 4293 1/23 LIT# 4596